

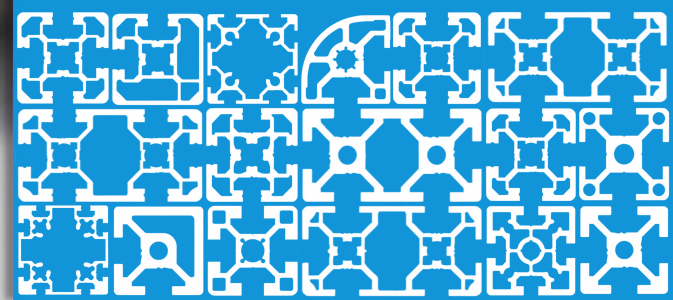


TONGYE®



**Aluminum Solutions**  
2021-2022 catalogue

Create infinite possibilities  
aluminium profiles from TONGYE®



# TABLE OF CONTENTS

## INTRODUCTION

|   |       |
|---|-------|
| Catalogue-----                                | 2     |
| Company Profile-----                          | 3     |
| TY Manufacturing-----                         | 4     |
| TY Manufacturing Capabilites-----             | 5     |
| Applications Aluminum Profiles Extrusion----- | 6     |
| Applications Surface Treatments-----          | 7     |
| Applications CNC Machining Chain-----         | 8     |
| Applications Testing / Verification-----      | 9     |
| TY Aluminum Profile Product-----              | 10-11 |
| TY Industry Aluminum Profile-----             | 12-19 |
| TY Aluminum Profile Accessories-----          | 20-36 |
| TY Non-Standard Aluminium Profiles-----       | 37    |
| TY Aluminium Solution Features-----           | 38    |

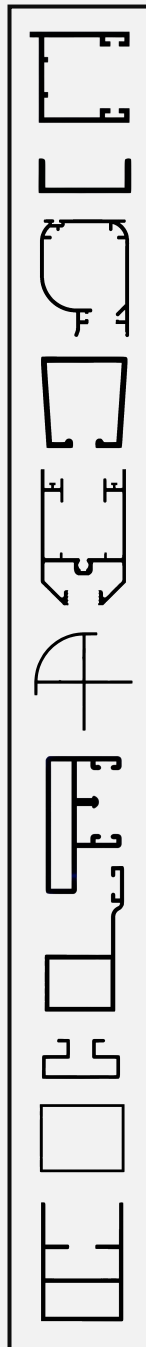
## WHAT YOU SHOULD KNOW TO HELP YOU GET AROUND THIS CATALOG

**Common Profile Terms**  
What prefixes and suffixes mean:

Take TY-8-4040W for example  
TY:TONGYE  
-8:T-slot width is 8.2 mm  
-4040W:4040 heavy duty  
-4040L:4040 light duty  
-4040R:4040 dual radius profile  
-4040X:4040 diagonal line profile -4040  
-1N:T-slot on one side only  
-4040-2N:T-slot on two opposite sides  
-4040-2NVS:T-slot on two adjacent sides  
-4040-45°: Dual radius profile with 45°outside radius

Other specialty profiles carry suffixes that are explained in the description on that profile's catalog page.

The diagram shows a cross-section of a complex aluminum profile. It features a central rectangular channel with a circular hole in the middle. Above and below this central section are two sets of flanges, each with a T-shaped slot. Arrows point from the labels 'T-Slot', 'Center Hole', and 'Center Channel' to their respective parts in the diagram.



Industry profile  
Aluminum profile  
Industrial module  
Body profile

Connection profiles  
Glazing profiles  
Profiles door/windows  
Big profiles  
Fasteners

An in-depth partnership with TONGYE

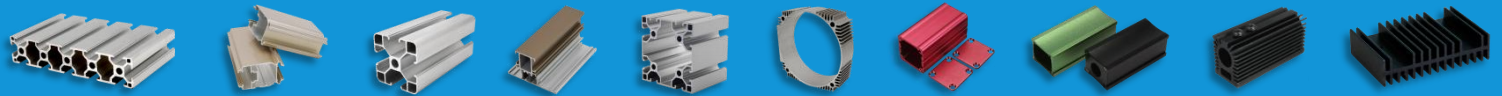
WWW.ZJNB.COM





TONGYE Mechanical & Electric Equipment Co., Ltd

**TongYe Aluminum Solutions** Engineering • Extrusion • Fabrication Finishing/ Anodizing • Assembly

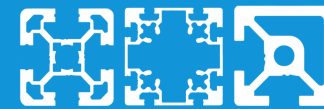


## TONGYE Mechanical & Electric Equipment Co., Ltd

TongYe is a company that produces, with over 10 years experiences of processes and manufacturing industrial aluminum extrusion profiles and industrial profiles, with the ability to design and manufacture non-standard fixtures, automatic equipment, and the ability to finish parts. TongYe provides professional and efficient industrial system solutions for the industrial field. We can provide designs according to the needs of different customers. In addition, our engineering design team uses CAD, PRO-E, SONIDWORKS and other design software to quickly and accurately provide you with Design a satisfactory solution, and design and manufacture the product in combination with the production process and production equipment. Our service goals are: reliable quality, fast delivery, perfect solution, reasonable, considerate after sale service, and customer's approval is our ultimate pursuit!







# Manufacturing

NingBo TongYe Mechanical & Electric Equipment Co.,Ltd has been providing aluminum extrusion profiles systematic manufacturing, processes and supporting services for suppliers all over the world since **2000**. Our 20000 square meters factory in Ningbo, Zhejiang Province, China, can process tens of thousands of tons of Aluminum Extrusion & Aluminum Die-casting profiles and Metal parts every year. We process and manufacture parts and components for many industries, including automated manufacturing, medical, communication equipment, automobiles, office equipment, electronics, power tools, building materials, etc. we got certificates ISO (ISO 9001 from 2015) and other international certificates.



Ningbo

**TONGYE**  
 Mechanical & Electric  
 Equipment Co.,Ltd  
 315040 Ningbo

**TongYe Aluminum Solutions** Engineering • Extrusion • Fabrication Finishing/ Anodizing • Assembly







**TongYe Aluminum Solutions** Extrusion • Fabrication Capabilities

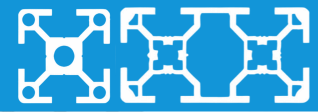


TONGYE® Mechanical & Electric Equipment Co.,Ltd has a complete set of production equipment and strong technical force. In terms of industrial aluminum profiles: profile extrusion production lines and related processing equipment are equipped with: **580T, 920T, 1460T, 1880T, 2600T, 4050T.** Processing of mechanical parts: punching machine, lathe, drilling machine, milling machine, grinding machine, wire cutting, EDM, argon arc welding machine, spot welding machine, shearing machine, Finishing: CNC machine & cutting center.

various series of alloys such as: **1060, 2011, 2011B, 2014, 2017, 2024, 3003, 4032, 5052, 5154, 5083, 6050, 6060, 6063, 6005A, 6061, 6082, 6262, 6201, 6A02, 6463, 7003, 7005, 7046, 7575, Etc.**





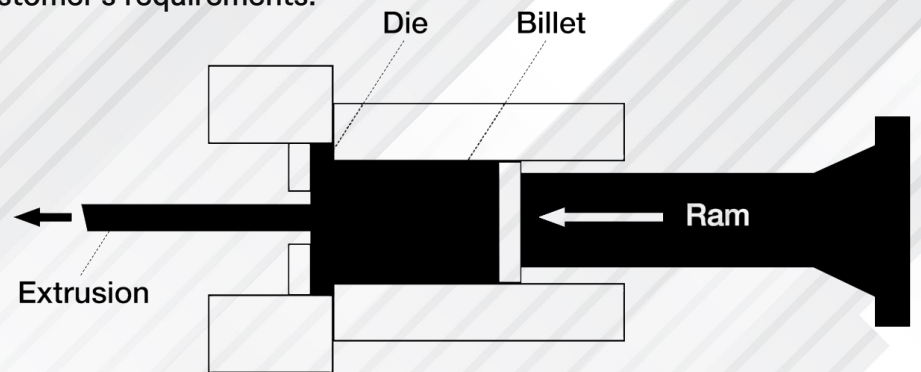


**TongYe Aluminum Solutions** Aluminum Extrusion • Profile



**Extrusion** is defined as the process of shaping material, such as aluminum, by forcing it to flow through a shaped opening in a die. Extruded material emerges as an elongated piece with the same profile as the die opening.

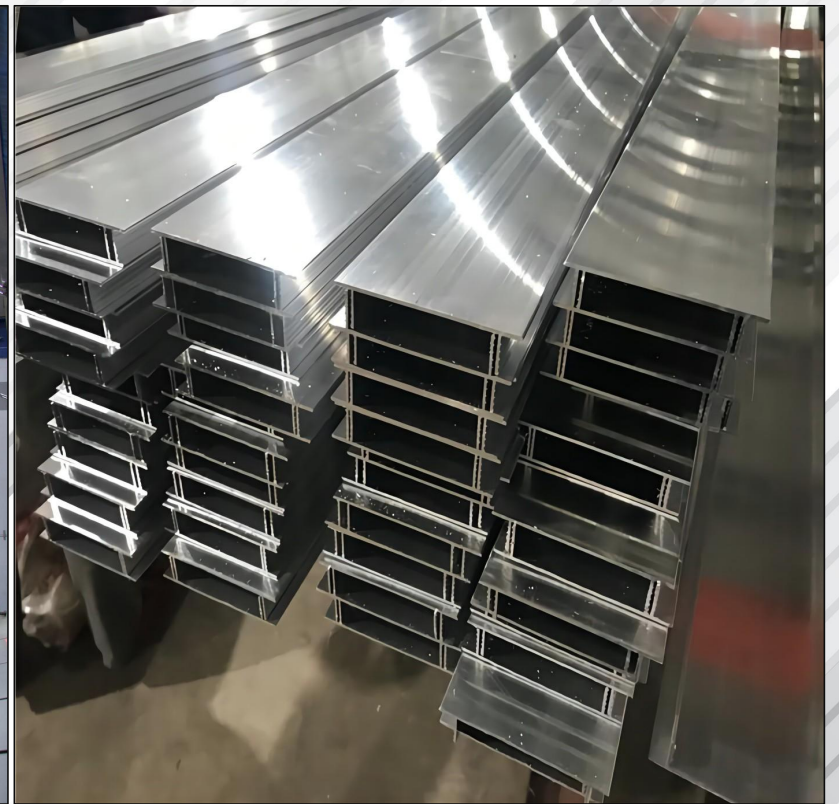
TONGYE® extrusion with 6 aluminum extruding lines from 500T to 4000T. with 7 inches to 12 inches billets, Our extrusion presses are positioned to efficiently uphold the manufacturing process; allowing us to provide consistent lead-times in the industry and on-time delivery performance. All presses are operated to strict standards ensuring superior extrusion with excellent surface quality. High tolerance aluminum extrusions are provided using commercial alloys, Tongye Extrusion also provides both custom and standard shapes based on customer's requirements.



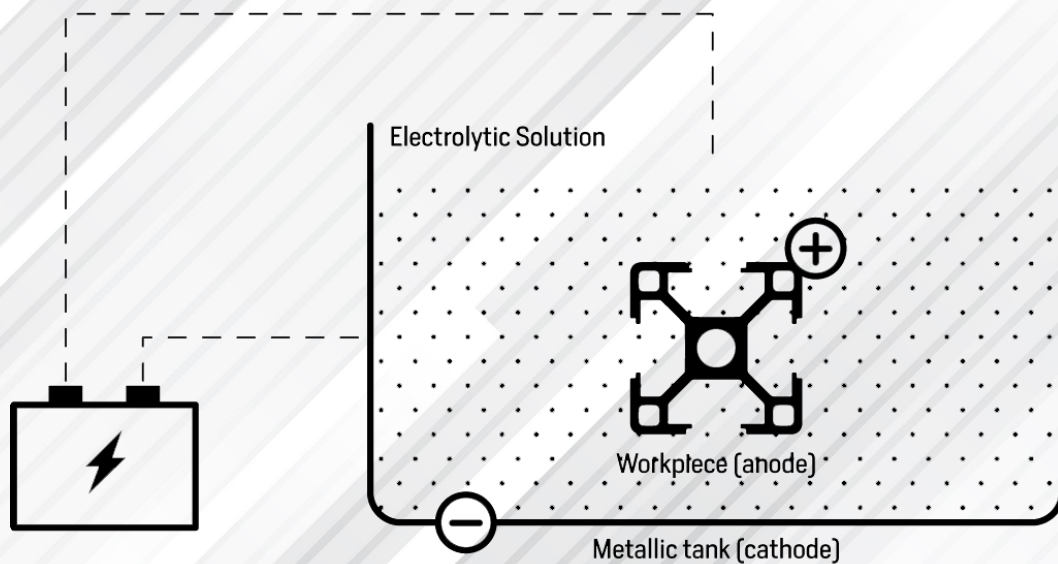




TongYe Aluminum Solutions Surface Treatments



The Anodizing Aluminum Process



**Anodizing** is an electro-chemical process. The surface of the metal is converted to aluminum oxide as a result of reactions going on at the anode in an acidic solution.

TONGYE® Provides various surface treatments such as:

- Anodizing
- Colored Anodizing
- Hardened Anodizing
- Acid Etching Polishing
- Electroplating
- Polyvinylidene Fluoride
- Wood Lacquer Transfer



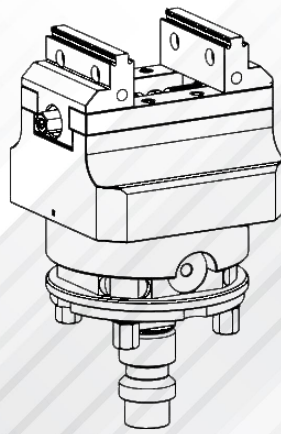


## TongYe Aluminum Solutions CNC Machining Chain



In the Aluminum profiles industry, CNC machining is used to modify aluminum parts and produce features that cannot be produced in the Aluminum profile mold.

CNC machining can be beneficial for removing edge rounds and draft angles, which is often required to complete the high-pressure die casting processes. Our precision CNC machining services can effectively remove these elements and improve the overall surface quality of the profiles part.



Entire **CNC**  
Machining Chain



TONGYE® have fast, sophisticated, and functional processing equipment that can provide you with a variety of precise CNC machining services, including milling, turning, deep hole drilling, EDM, wire-cut electrical discharge machining, centerless grinding, surface grinding, etc.

With our precision three-axis, four-axis and five-axis CNC machining centers, coupled with unique technical experience and customer-centric service, whether you have planned the exact part specifications or need help fine-tuning the design first trustworthy.

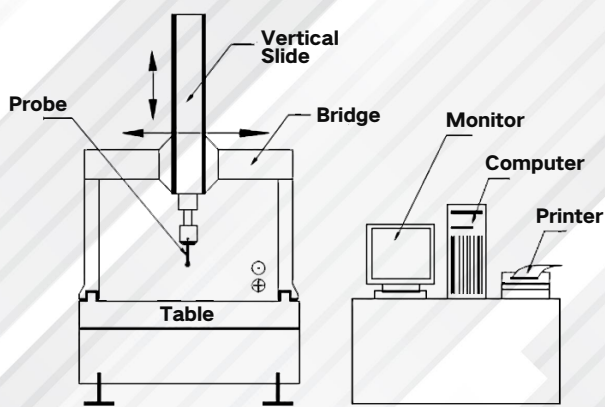
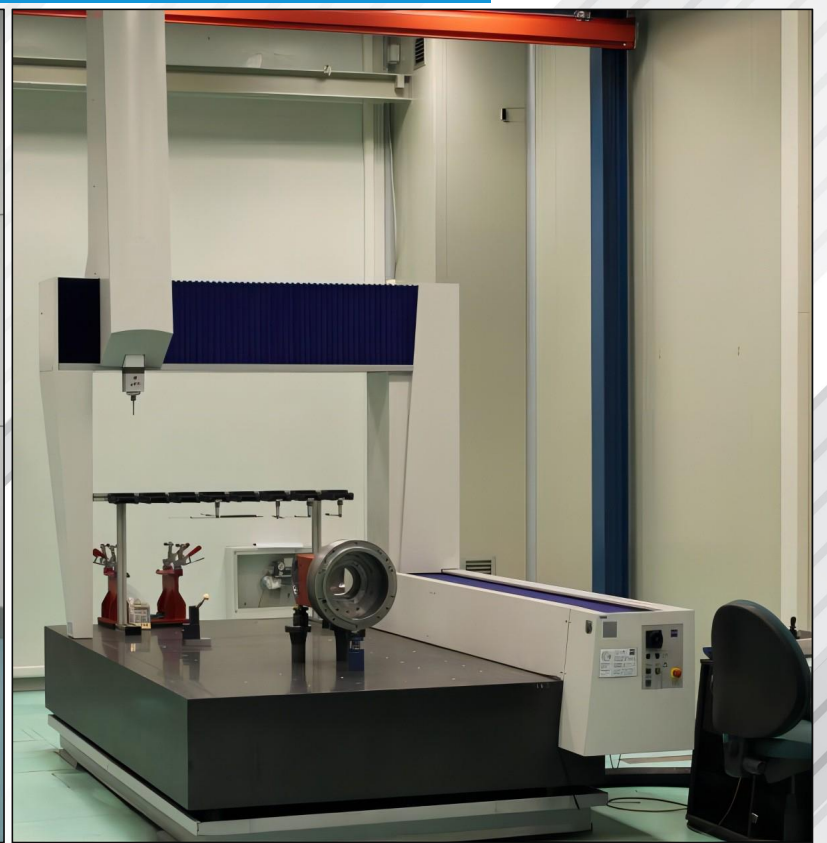
Types of Machining

- Multi-Point Drilling
- Multi-Point Tapping
- Milling
- Lathe and Turning
- Grinding





TongYe Aluminum Solutions Testing • Verification



### Premium Quality Laboratory

accuracy, reliability and timeliness of the reported test results. Laboratory results must be as accurate as possible, all aspects of laboratory operations must be reliable, and reports must be timely to ensure that the product meets the requirements and functions in actual use.

TONGYE® has High precision Material Analysis equipment, Mechanical Testing equipment, Slat Spray Testing equipment and Cross-Cut Testing for test the porosity of Aluminum profiles, extrusion and metal part. ISO9001 / TS16949 certification.



TONGYE® perform quality assurance according to customer requirements, and test and verify the quality of samples. This ensures that higher quality products are obtained during mass production.

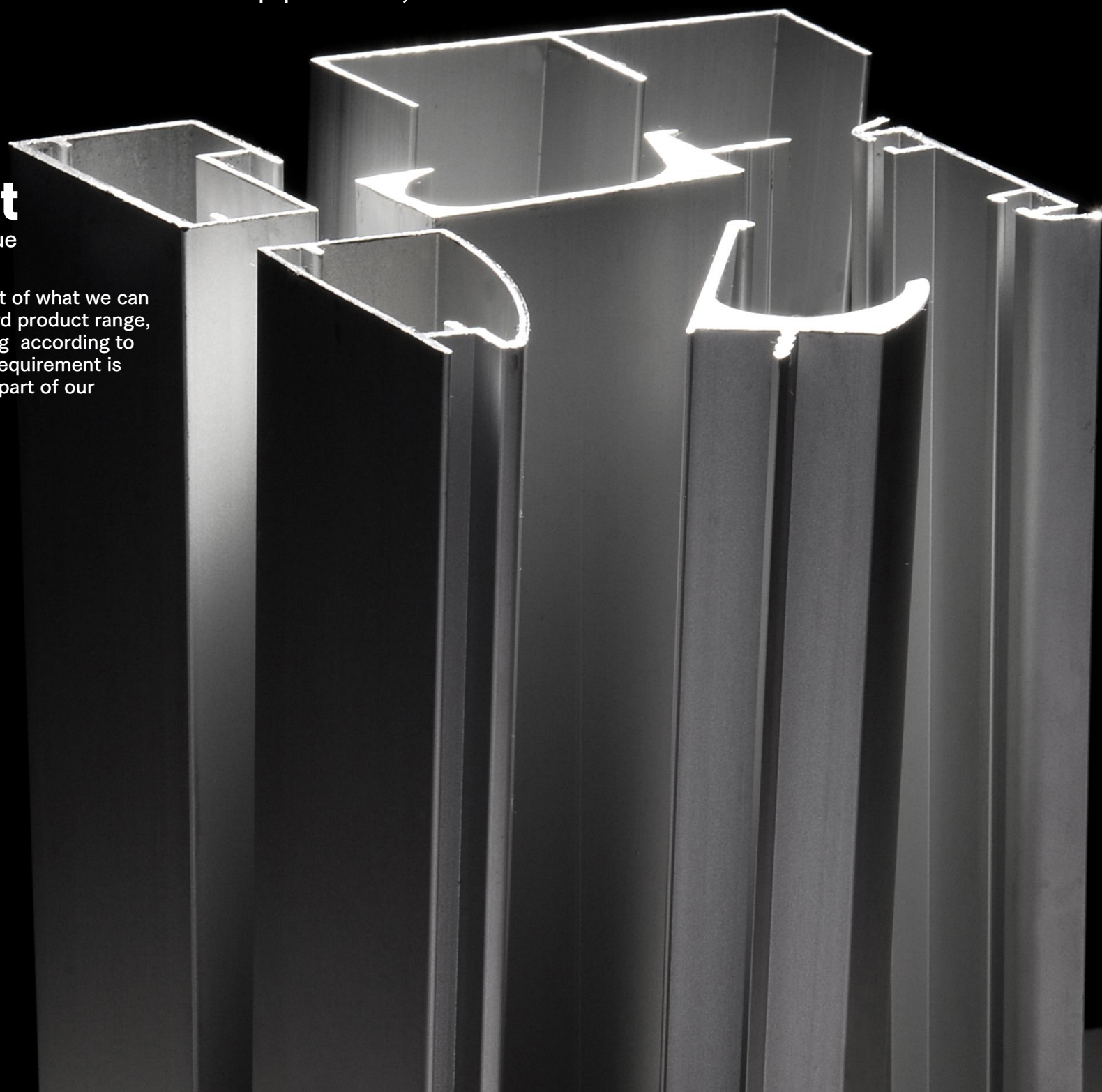




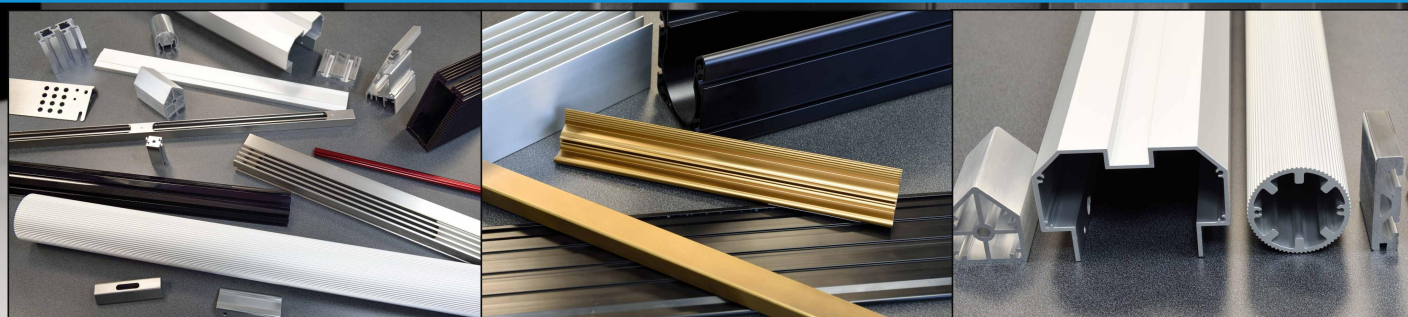
# Product

## Product Catalogue

Following is a digest of what we can offer as the standard product range, OEM manufacturing according to specific customer requirement is another important part of our offering.



**TongYe Aluminum Solutions** Aluminum Extrusion • Profile • OEM







## Industry Aluminum Profile

Aluminum profile has become one of the popular and preferred materials in most industries. As a professional manufacturer of industrial aluminium profile, TONGYE industrial aluminum profiles are widely used in subway tracks, containers, radiators, car tail plates, aluminum pallets, aluminum overpasses, aluminum formwork, assembly line aluminum, aluminum mesh.







### 15 Series profiles

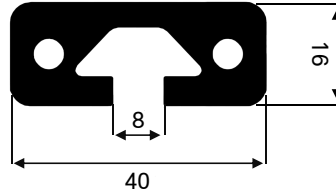
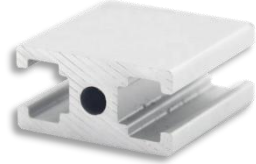
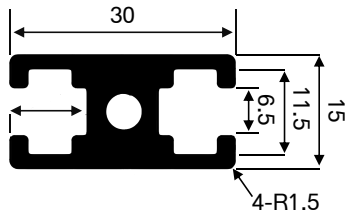
Aluminum: 6063-T5 (EN-AW-6063).  
Length(m) = 6 Silver Anodizing  
Section Modulus(cm<sup>3</sup>): Zx:0.98 Zy:0.93

| Tongye Profile no. | Mass of inertia. cm <sup>4</sup> |      | Weight<br>kg/m |
|--------------------|----------------------------------|------|----------------|
|                    | lx                               | ly   |                |
| TY-6-1530          | 1.47                             | 0.75 | 0.70           |

### 16 Series profiles

Aluminum: 6063-T5 (EN-AW-6063).  
Length(m) = 6 Silver Anodizing  
Section Modulus(cm<sup>3</sup>): Zx:42.50 Zy:42.50

| Tongye Profile no. | Mass of inertia. cm <sup>4</sup> |      | Weight<br>kg/m |
|--------------------|----------------------------------|------|----------------|
|                    | lx                               | ly   |                |
| TY-8-1640          | 1.00                             | 7.00 | 1.32           |



### 20 Series profiles

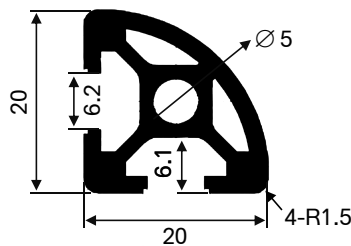
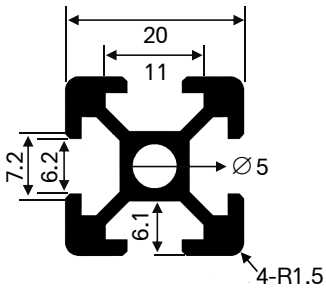
Aluminum: 6063-T5 (EN-AW-6063).  
Length(m) = 6 Silver Anodizing  
Section Modulus(cm<sup>3</sup>): Zx:0.72 Zy:0.72

| Tongye Profile no. | Mass of inertia. cm <sup>4</sup> |      | Weight<br>kg/m |
|--------------------|----------------------------------|------|----------------|
|                    | lx                               | ly   |                |
| TY-6-2020          | 0.72                             | 0.72 | 0.50           |

### 20 Series profiles

Aluminum: 6063-T5 (EN-AW-6063).  
Length(m) = 6 Silver Anodizing

| Tongye Profile no. | Mass of inertia. cm <sup>4</sup> |    | Weight<br>kg/m |
|--------------------|----------------------------------|----|----------------|
|                    | lx                               | ly |                |
| TY-6-2020R         |                                  |    | 0.50           |



### 20 Series profiles

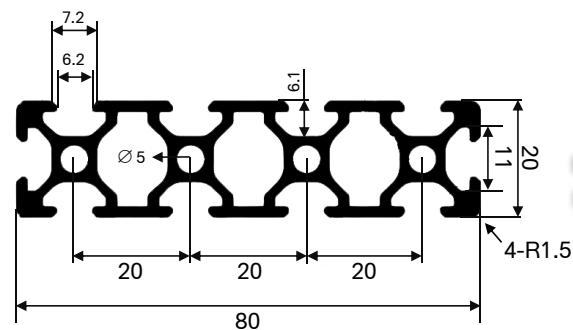
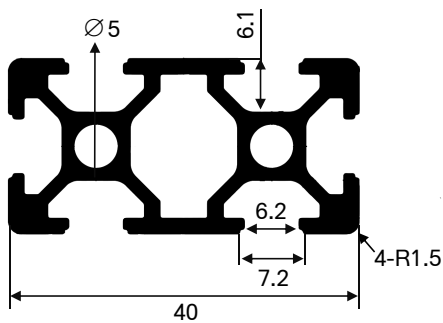
Aluminum: 6063-T5 (EN-AW-6063).  
Length(m) = 6 Silver Anodizing  
Section Modulus(cm<sup>3</sup>): Zx:2.32 Zy:1.32

| Tongye Profile no. | Mass of inertia. cm <sup>4</sup> |      | Weight<br>kg/m |
|--------------------|----------------------------------|------|----------------|
|                    | lx                               | ly   |                |
| TY-6-2040          | 4.64                             | 1.42 | 0.95           |

### 20 Series profiles

Aluminum: 6063-T5 (EN-AW-6063).  
Length(m) = 6 Silver Anodizing  
Section Modulus(cm<sup>3</sup>): Zx:8.07 Zy:2.39

| Tongye Profile no. | Mass of inertia. cm <sup>4</sup> |      | Weight<br>kg/m |
|--------------------|----------------------------------|------|----------------|
|                    | lx                               | ly   |                |
| TY-6-2080          | 32.29                            | 2.39 | 1.85           |



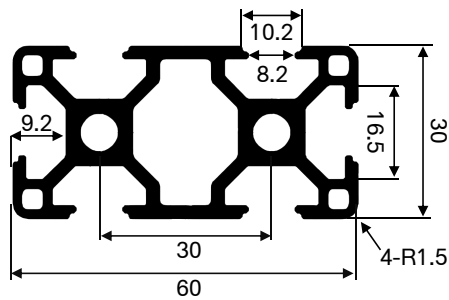




### 30 Series profiles

Aluminum: 6063-T5 (EN-AW-6063).  
Length(m) = 6 Silver Anodizing  
Section Modulus(cm<sup>3</sup>): Zx:6.60 Zy:3.30

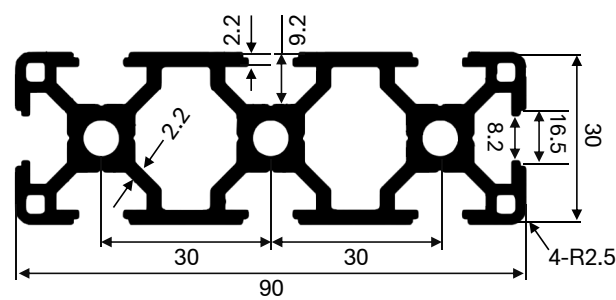
| Tongye Profile no. | Mass of inertia. cm <sup>4</sup> |      | Weight<br>kg/m |
|--------------------|----------------------------------|------|----------------|
|                    | lx                               | ly   |                |
| TY-8-3060          | 19.80                            | 5.15 | 1.75           |



### 30 Series profiles

Aluminum: 6063-T5 (EN-AW-6063).  
Length(m) = 6 Silver Anodizing  
Section Modulus(cm<sup>3</sup>): Zx:6.60 Zy:3.30

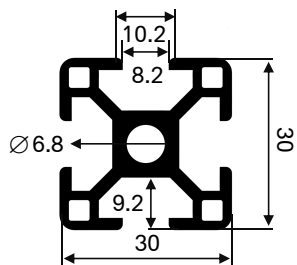
| Tongye Profile no. | Mass of inertia. cm <sup>4</sup> |      | Weight<br>kg/m |
|--------------------|----------------------------------|------|----------------|
|                    | lx                               | ly   |                |
| TY-8-3090          | 19.80                            | 5.15 | 2.58           |



### 30 Series profiles

Aluminum: 6063-T5 (EN-AW-6063).  
Length(m) = 6 Silver Anodizing  
Section Modulus(cm<sup>3</sup>): Zx:2.82 Zy:2.82

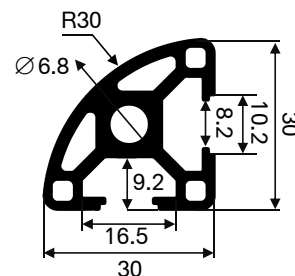
| Tongye Profile no. | Mass of inertia. cm <sup>4</sup> |      | Weight<br>kg/m |
|--------------------|----------------------------------|------|----------------|
|                    | lx                               | ly   |                |
| TY-8-3030B         | 3.35                             | 3.35 | 1.0            |



### 30 Series profiles

Aluminum: 6063-T5 (EN-AW-6063).  
Length(m) = 6 Silver Anodizing  
Section Modulus(cm<sup>3</sup>): Zx:1.40 Zy:1.40

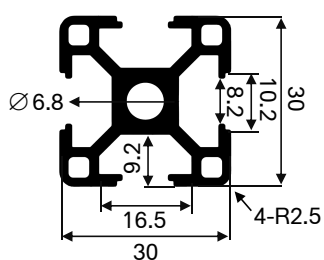
| Tongye Profile no. | Mass of inertia. cm <sup>4</sup> |      | Weight<br>kg/m |
|--------------------|----------------------------------|------|----------------|
|                    | lx                               | ly   |                |
| TY-8-3030R         | 2.40                             | 2.40 | 0.95           |



### 30 Series profiles

Aluminum: 6063-T5 (EN-AW-6063).  
Length(m) = 6 Silver Anodizing  
Section Modulus(cm<sup>3</sup>): Zx:1.80 Zy:1.80

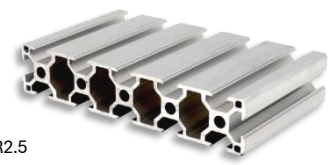
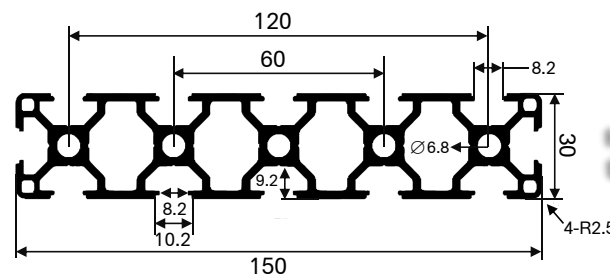
| Tongye Profile no. | Mass of inertia. cm <sup>4</sup> |      | Weight<br>kg/m |
|--------------------|----------------------------------|------|----------------|
|                    | lx                               | ly   |                |
| TY-8-3030          | 2.85                             | 2.85 | 0.95           |



### 30 Series profiles

Aluminum: 6063-T5 (EN-AW-6063).  
Length(m) = 6 Silver Anodizing  
Section Modulus(cm<sup>3</sup>): Zx:0.72 Zy:0.72

| Tongye Profile no. | Mass of inertia. cm <sup>4</sup> |      | Weight<br>kg/m |
|--------------------|----------------------------------|------|----------------|
|                    | lx                               | ly   |                |
| TY-8-30150         | 0.72                             | 0.72 | 4.20           |



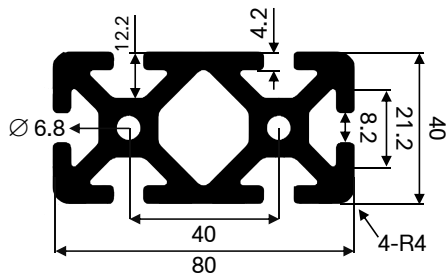




### 40 Series profiles

Aluminum: 6063-T5 (EN-AW-6063).  
Length(m) = 6 Silver Anodizing

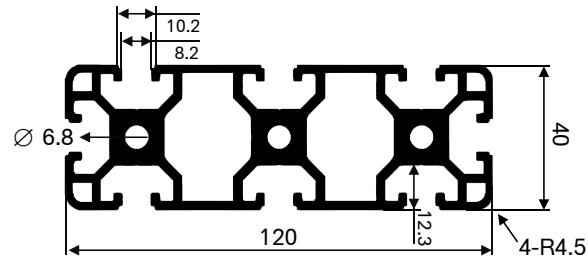
| Tongye Profile no. | Weight<br>kg/m |
|--------------------|----------------|
| TY-8-4080HW        | 4.95           |



### 40 Series profiles

Aluminum: 6063-T5 (EN-AW-6063).  
Length(m) = 6 Silver Anodizing  
Section Modulus(cm<sup>3</sup>): Zx:33.59 Zy:12.07

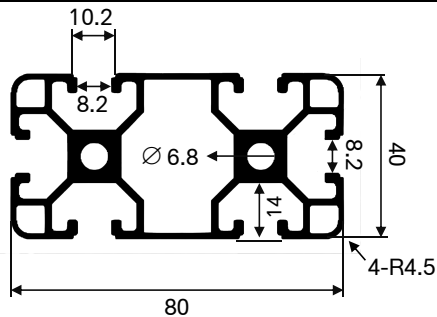
| Tongye Profile no. | Mass of inertia. cm <sup>4</sup><br>Ix Iy | Weight<br>kg/m |
|--------------------|---|----------------|
| TY-8-40120         | 201.57 24.15                              | 4.58           |



### 40 Series profiles

Aluminum: 6063-T5 (EN-AW-6063).  
Length(m) = 6 Silver Anodizing  
Section Modulus(cm<sup>3</sup>): Zx:17.4 Zy:8.40

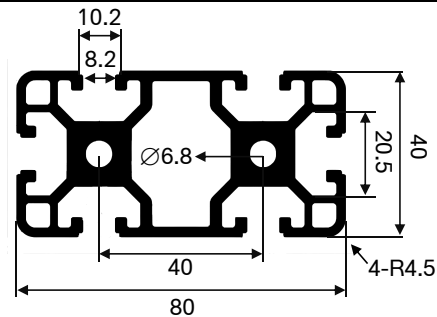
| Tongye Profile no. | Mass of inertia. cm <sup>4</sup><br>Ix Iy | Weight<br>kg/m |
|--------------------|---|----------------|
| TY-8-4080L         | 74.8 21.6                                 | 2.55           |



### 40 Series profiles

Aluminum: 6063-T5 (EN-AW-6063).  
Length(m) = 6 Silver Anodizing  
Section Modulus(cm<sup>3</sup>): Zx:17.4 Zy:8.70

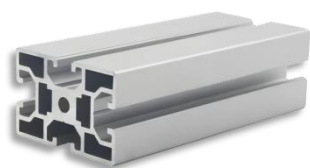
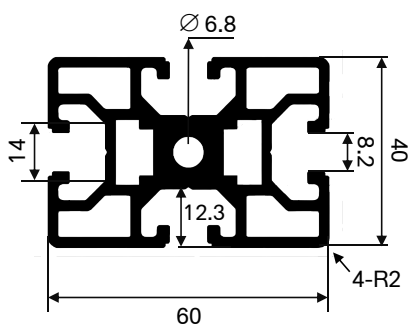
| Tongye Profile no. | Mass of inertia. cm <sup>4</sup><br>Ix Iy | Weight<br>kg/m |
|--------------------|---|----------------|
| TY-8-4080          | 74.8 21.6                                 | 3.20           |



### 40 Series profiles

Aluminum: 6063-T5 (EN-AW-6063).  
Length(m) = 6 Silver Anodizing  
Section Modulus(cm<sup>3</sup>): Zx:2.84 Zy:2.84

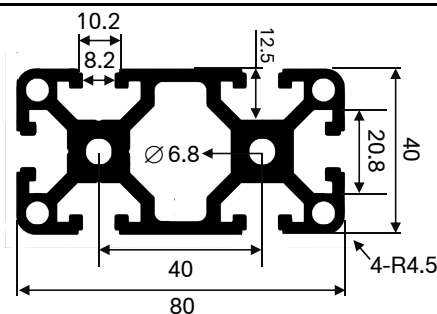
| Tongye Profile no. | Mass of inertia. cm <sup>4</sup><br>Ix Iy | Weight<br>kg/m |
|--------------------|---|----------------|
| TY-8-4060          | 6.15 6.15                                 | 2.8            |



### 40 Series profiles

Aluminum: 6063-T5 (EN-AW-6063).  
Length(m) = 6 Silver Anodizing  
Section Modulus(cm<sup>3</sup>): Zx:19.20 Zy:9.60

| Tongye Profile no. | Mass of inertia. cm <sup>4</sup><br>Ix Iy | Weight<br>kg/m |
|--------------------|---|----------------|
| TY-6-4080W         | 82.00 20.35                               | 3.602          |



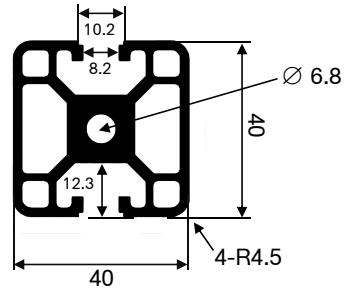




### 40 Series profiles

Aluminum: 6063-T5 (EN-AW-6063).  
Length(m) = 6 Silver Anodizing  
Section Modulus(cm<sup>3</sup>): Zx:4.53 Zy:4.37

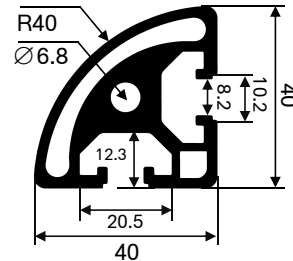
| Tongye Profile no. | Mass of inertia. cm <sup>4</sup> |      | Weight<br>kg/m |
|--------------------|----------------------------------|------|----------------|
|                    | lx                               | ly   |                |
| TY-8-4040-2N       | 9.18                             | 8.75 | 1.82           |



### 40 Series profiles

Aluminum: 6063-T5 (EN-AW-6063).  
Length(m) = 6 Silver Anodizing  
Section Modulus(cm<sup>3</sup>): Zx:2.84 Zy:2.84

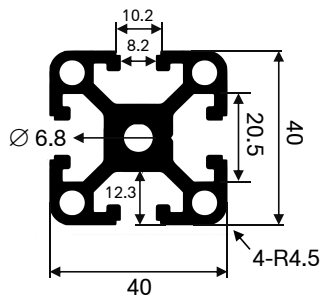
| Tongye Profile no. | Mass of inertia. cm <sup>4</sup> |      | Weight<br>kg/m |
|--------------------|----------------------------------|------|----------------|
|                    | lx                               | ly   |                |
| TY-8-4040R         | 6.15                             | 6.15 | 1.60           |



### 40 Series profiles

Aluminum: 6063-T5 (EN-AW-6063).  
Length(m) = 6 Silver Anodizing  
Section Modulus(cm<sup>3</sup>): Zx:5.32 Zy:5.32

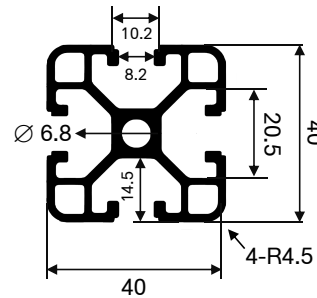
| Tongye Profile no. | Mass of inertia. cm <sup>4</sup> |       | Weight<br>kg/m |
|--------------------|----------------------------------|-------|----------------|
|                    | lx                               | ly    |                |
| TY-8-4040HW        | 10.20                            | 10.20 | 2.02           |



### 40 Series profiles

Aluminum: 6063-T5 (EN-AW-6063).  
Length(m) = 6 Silver Anodizing  
Section Modulus(cm<sup>3</sup>): Zx:4.86 Zy:4.86

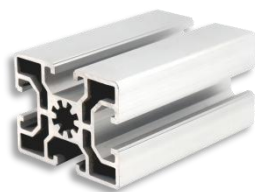
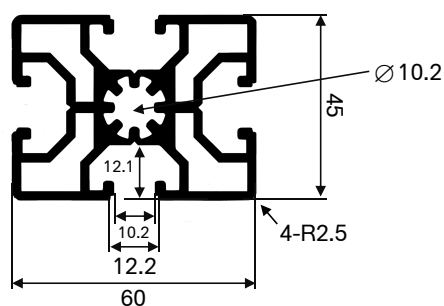
| Tongye Profile no. | Mass of inertia. cm <sup>4</sup> |      | Weight<br>kg/m |
|--------------------|----------------------------------|------|----------------|
|                    | lx                               | ly   |                |
| TY-8-4040L         | 9.25                             | 9.25 | 1.46           |



### 45 Series profiles

Aluminum: 6063-T5 (EN-AW-6063).  
Length(m) = 6 Silver Anodizing  
Section Modulus(cm<sup>3</sup>): Zx:9.60 Zy:7.11

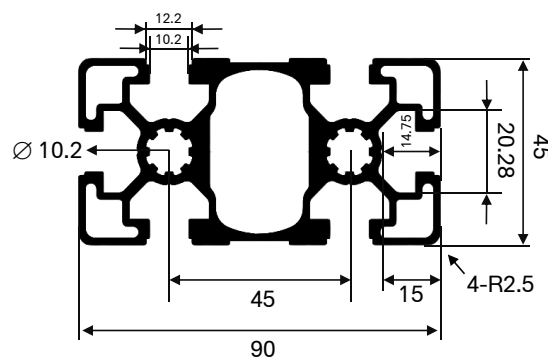
| Tongye Profile no. | Mass of inertia. cm <sup>4</sup> |       | Weight<br>kg/m |
|--------------------|----------------------------------|-------|----------------|
|                    | lx                               | ly    |                |
| TY-10-4560         | 27.26                            | 15.16 | 2.65           |



### 45 Series profiles

Aluminum: 6063-T5 (EN-AW-6063).  
Length(m) = 6 Silver Anodizing  
Section Modulus(cm<sup>3</sup>): Zx:21.60 Zy:10.80

| Tongye Profile no. | Mass of inertia. cm <sup>4</sup> |       | Weight<br>kg/m |
|--------------------|----------------------------------|-------|----------------|
|                    | lx                               | ly    |                |
| TY-10-4590L        | 93.20                            | 23.70 | 3.46           |



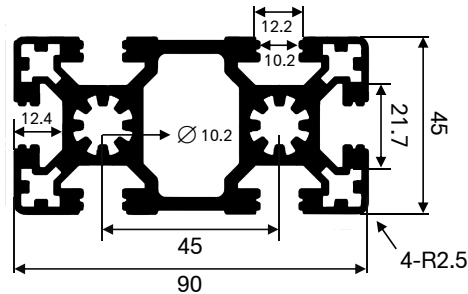




### 45 Series profiles

Aluminum: 6063-T5 (EN-AW-6063).  
Length(m) = 6 Silver Anodizing  
Section Modulus(cm<sup>3</sup>): Zx:24.60 Zy:12.30

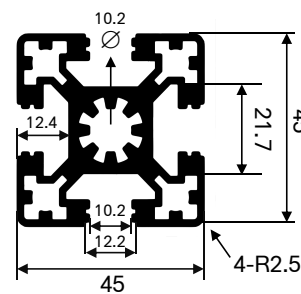
| Tongye Profile no. | Mass of inertia. cm <sup>4</sup> |       | Weight<br>kg/m |
|--------------------|----------------------------------|-------|----------------|
|                    | lx                               | ly    |                |
| TY-10-4590W        | 112.10                           | 29.75 | 4.64           |



### 45 Series profiles

Aluminum: 6063-T5 (EN-AW-6063).  
Length(m) = 6 Silver Anodizing  
Section Modulus(cm<sup>3</sup>): Zx:6.52 Zy:6.52

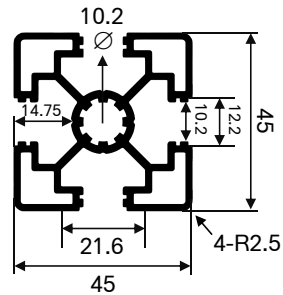
| Tongye Profile no. | Mass of inertia. cm <sup>4</sup> |       | Weight<br>kg/m |
|--------------------|----------------------------------|-------|----------------|
|                    | lx                               | ly    |                |
| TY-10-4545W        | 15.12                            | 15.12 | 2.68           |



### 45 Series profiles

Aluminum: 6063-T5 (EN-AW-6063).  
Length(m) = 6 Silver Anodizing  
Section Modulus(cm<sup>3</sup>): Zx:5.90 Zy:5.90

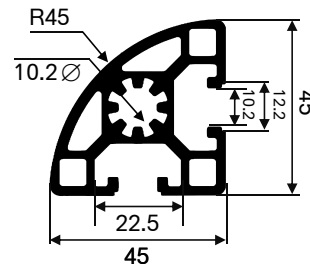
| Tongye Profile no. | Mass of inertia. cm <sup>4</sup> |       | Weight<br>kg/m |
|--------------------|----------------------------------|-------|----------------|
|                    | lx                               | ly    |                |
| TY-10-4545L        | 13.68                            | 13.68 | 1.65           |



### 45 Series profiles

Aluminum: 6063-T5 (EN-AW-6063).  
Length(m) = 6 Silver Anodizing  
Section Modulus(cm<sup>3</sup>): Zx:4.50 Zy:4.50

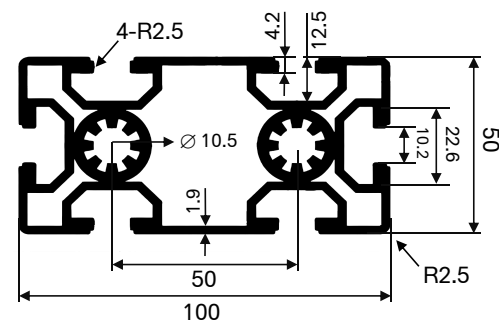
| Tongye Profile no. | Mass of inertia. cm <sup>4</sup> |       | Weight<br>kg/m |
|--------------------|----------------------------------|-------|----------------|
|                    | lx                               | ly    |                |
| TY-10-4545R        | 11.33                            | 11.33 | 1.75           |



### 50 Series profiles

Aluminum: 6063-T5 (EN-AW-6063).  
Length(m) = 6 Silver Anodizing  
Section Modulus(cm<sup>3</sup>): Zx:38.22 Zy:20.48

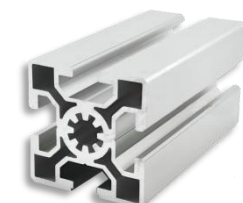
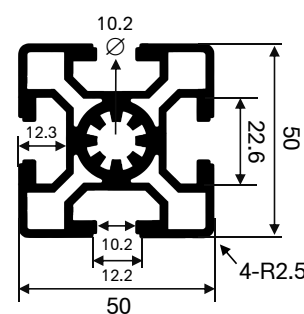
| Tongye Profile no. | Mass of inertia. cm <sup>4</sup> |       | Weight<br>kg/m |
|--------------------|----------------------------------|-------|----------------|
|                    | lx                               | ly    |                |
| TY-10-50100        | 191.09                           | 51.21 | 4.20           |



### 50 Series profiles

Aluminum: 6063-T5 (EN-AW-6063).  
Length(m) = 6 Silver Anodizing  
Section Modulus(cm<sup>3</sup>): Zx:10.32 Zy:10.32

| Tongye Profile no. | Mass of inertia. cm <sup>4</sup> |       | Weight<br>kg/m |
|--------------------|----------------------------------|-------|----------------|
|                    | lx                               | ly    |                |
| TY-10-5050         | 25.81                            | 25.81 | 2.54           |



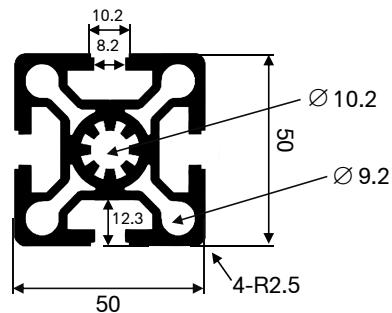




### 50 Series profiles

Aluminum: 6063-T5 (EN-AW-6063).  
Length(m) = 6 Silver Anodizing  
Section Modulus(cm<sup>3</sup>): Zx:10.32 Zy:10.32

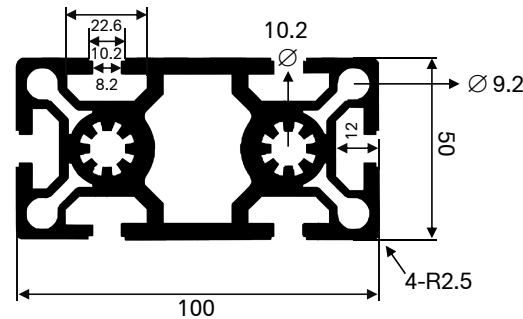
| Tongye Profile no. | Mass of inertia. cm <sup>4</sup> |       | Weight<br>kg/m |
|--------------------|----------------------------------|-------|----------------|
|                    | Ix                               | Iy    |                |
| TY-8-5050          | 25.81                            | 25.81 | 3.3            |



### 50 Series profiles

Aluminum: 6063-T5 (EN-AW-6063).  
Length(m) = 6 Silver Anodizing  
Section Modulus(cm<sup>3</sup>): Zx:32.75 Zy:17.03

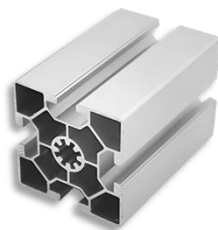
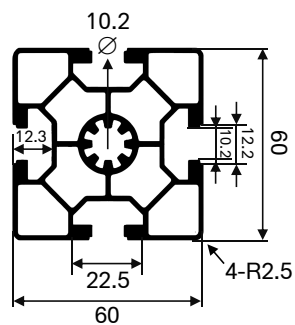
| Tongye Profile no. | Mass of inertia. cm <sup>4</sup> |       | Weight<br>kg/m |
|--------------------|----------------------------------|-------|----------------|
|                    | Ix                               | Iy    |                |
| TY-8-50100         | 163.65                           | 44.91 | 6.2            |



### 60 Series profiles

Aluminum: 6063-T5 (EN-AW-6063).  
Length(m) = 6 Silver Anodizing  
Section Modulus(cm<sup>3</sup>): Zx:16.27 Zy:16.27

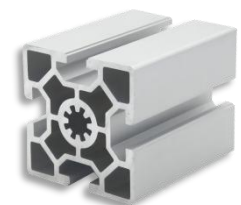
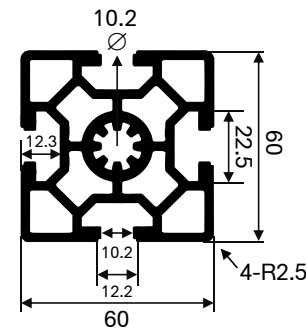
| Tongye Profile no. | Mass of inertia. cm <sup>4</sup> |       | Weight<br>kg/m |
|--------------------|----------------------------------|-------|----------------|
|                    | Ix                               | Iy    |                |
| TY-10-6060L        | 48.85                            | 48.85 | 2.80           |



### 60 Series profiles

Aluminum: 6063-T5 (EN-AW-6063).  
Length(m) = 6 Silver Anodizing  
Section Modulus(cm<sup>3</sup>): Zx:15.00 Zy:15.00

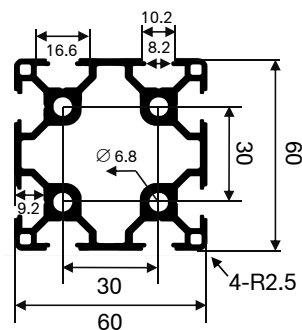
| Tongye Profile no. | Mass of inertia. cm <sup>4</sup> |       | Weight<br>kg/m |
|--------------------|----------------------------------|-------|----------------|
|                    | Ix                               | Iy    |                |
| TY-10-6060         | 45.02                            | 45.02 | 4.20           |



### 60 Series profiles

Aluminum: 6063-T5 (EN-AW-6063).  
Length(m) = 6 Silver Anodizing  
Section Modulus(cm<sup>3</sup>): Zx:10.80 Zy:10.80

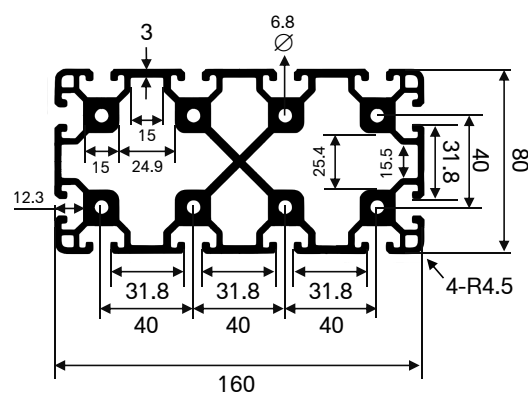
| Tongye Profile no. | Mass of inertia. cm <sup>4</sup> |       | Weight<br>kg/m |
|--------------------|----------------------------------|-------|----------------|
|                    | Ix                               | Iy    |                |
| TY-8-6060          | 32.40                            | 32.40 | 2.80           |



### 80 Series profiles

Aluminum: 6063-T5 (EN-AW-6063).  
Length(m) = 6 Silver Anodizing  
Section Modulus(cm<sup>3</sup>): Zx:95.58 Zy:56.90

| Tongye Profile no. | Mass of inertia. cm <sup>4</sup> |        | Weight<br>kg/m |
|--------------------|----------------------------------|--------|----------------|
|                    | Ix                               | Iy     |                |
| TY-8-60160         | 764.62                           | 227.58 | 11.5           |



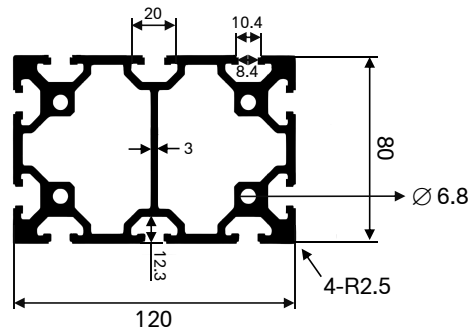




## 80 Series profiles

Aluminum: 6063-T5 (EN-AW-6063).  
Length(m) = 6 Silver Anodizing  
Section Modulus(cm<sup>3</sup>): Zx:91.03 Zy:60.71

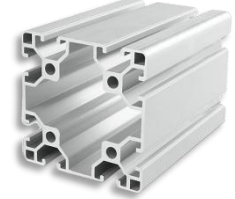
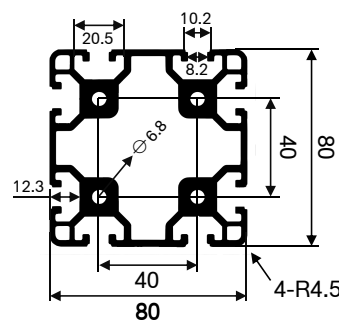
| Tongye Profile no. | Mass of inertia. cm <sup>4</sup> |        | Weight<br>kg/m |
|--------------------|----------------------------------|--------|----------------|
|                    | Ix                               | Iy     |                |
| TY-8-80120         | 501.70                           | 243.73 | 7.85           |



## 80 Series profiles

Aluminum: 6063-T5 (EN-AW-6063).  
Length(m) = 6 Silver Anodizing  
Section Modulus(cm<sup>3</sup>): Zx:33.52 Zy:33.52

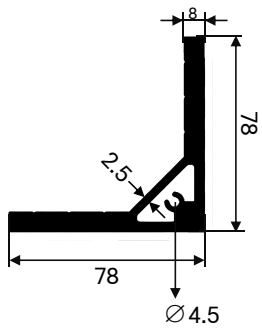
| Tongye Profile no. | Mass of inertia. cm <sup>4</sup> |        | Weight<br>kg/m |
|--------------------|----------------------------------|--------|----------------|
|                    | Ix                               | Iy     |                |
| TY-8-8080          | 134.08                           | 134.08 | 5.20           |



## 90 Series profiles

Aluminum: 6063-T5 (EN-AW-6063).  
Length(m) = 6 Silver Anodizing  
Section Modulus(cm<sup>3</sup>): Zx:11.94 Zy:23.19

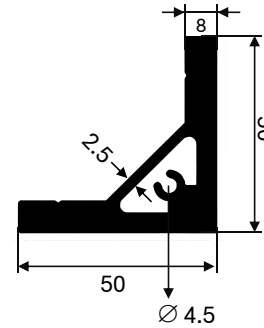
| Tongye Profile no. | Mass of inertia. cm <sup>4</sup> |        | Weight<br>kg/m |
|--------------------|----------------------------------|--------|----------------|
|                    | Ix                               | Iy     |                |
| TY-7878-90A        | 27.37                            | 107.93 | 3.52           |



## 90 Series profiles

Aluminum: 6063-T5 (EN-AW-6063).  
Length(m) = 6 Silver Anodizing  
Section Modulus(cm<sup>3</sup>): Zx:3.81 Zy:6.96

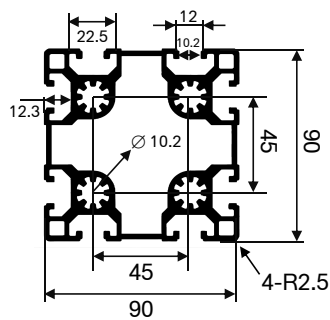
| Tongye Profile no. | Mass of inertia. cm <sup>4</sup> |       | Weight<br>kg/m |
|--------------------|----------------------------------|-------|----------------|
|                    | Ix                               | Iy    |                |
| TY-5050-90A        | 6.92                             | 25.93 | 2.25           |



## 90 Series profiles

Aluminum: 6063-T5 (EN-AW-6063).  
Length(m) = 6 Silver Anodizing  
Section Modulus(cm<sup>3</sup>): Zx:40.76 Zy:40.76

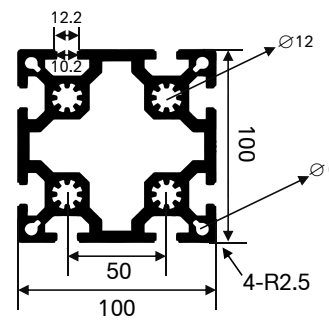
| Tongye Profile no. | Mass of inertia. cm <sup>4</sup> |        | Weight<br>kg/m |
|--------------------|----------------------------------|--------|----------------|
|                    | Ix                               | Iy     |                |
| TY-10-9090         | 183.44                           | 183.44 | 6.30           |



## 100 Series profiles

Aluminum: 6063-T5 (EN-AW-6063).  
Length(m) = 6 Silver Anodizing  
Section Modulus(cm<sup>3</sup>): Zx:48.15 Zy:48.15

| Tongye Profile no. | Mass of inertia. cm <sup>4</sup> |        | Weight<br>kg/m |
|--------------------|----------------------------------|--------|----------------|
|                    | Ix                               | Iy     |                |
| TY-10-100100       | 216.64                           | 216.64 | 11.5           |



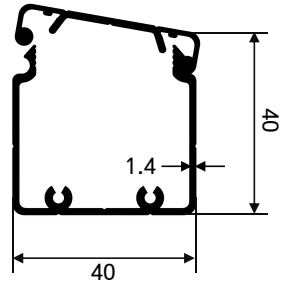




## 4040 Trunking

Aluminum: 6063-T5 (EN-AW-6063).  
Length(m) = 6 Silver Anodizing  
Section Modulus(cm<sup>3</sup>): Zx:6.74 Zy:6.74

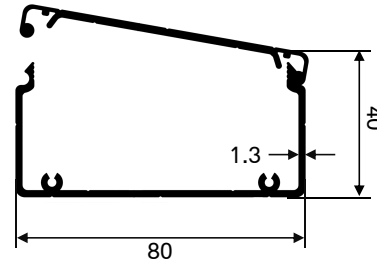
| Tongye Profile no. | Mass of inertia. cm <sup>4</sup> |      | Weight<br>kg/m |
|--------------------|----------------------------------|------|----------------|
|                    | lx                               | ly   |                |
| TY-4040XC          | 7.07                             | 7.07 | 0.75           |



## 4080 Trunking

Aluminum: 6063-T5 (EN-AW-6063).  
Length(m) = 6 Silver Anodizing  
Section Modulus(cm<sup>3</sup>): Zx:42.73 Zy:13.61

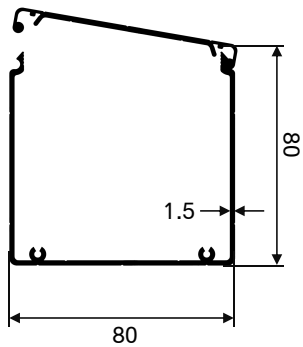
| Tongye Profile no. | Mass of inertia. cm <sup>4</sup> |       | Weight<br>kg/m |
|--------------------|----------------------------------|-------|----------------|
|                    | lx                               | ly    |                |
| TY-4080XC          | 42.73                            | 13.61 | 1.49           |



## 8080 Trunking

Aluminum: 6063-T5 (EN-AW-6063).  
Length(m) = 6 Silver Anodizing  
Section Modulus(cm<sup>3</sup>): Zx:11.32 Zy:11.32

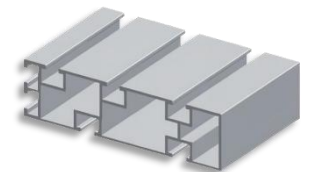
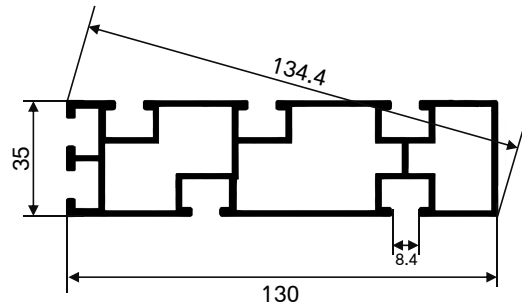
| Tongye Profile no. | Mass of inertia. cm <sup>4</sup> |       | Weight<br>kg/m |
|--------------------|----------------------------------|-------|----------------|
|                    | lx                               | ly    |                |
| TY-8080XC          | 42.73                            | 13.61 | 2.1            |



## Speed chain profiles

Aluminum: 6063-T5 (EN-AW-6063).  
Length(m) = 6 Silver Anodizing

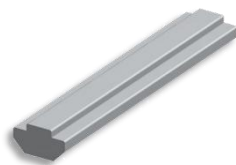
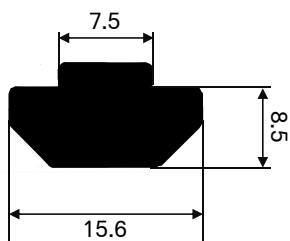
| Tongye Profile no. | Weight<br>kg/m |
|--------------------|----------------|
|                    |                |



## T type aluminum

Aluminum: 6063-T5 (EN-AW-6063).  
Length(m) = 6 Silver Anodizing  
Section Modulus(cm<sup>3</sup>): Zx:0.20 Zy:0.33

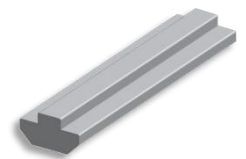
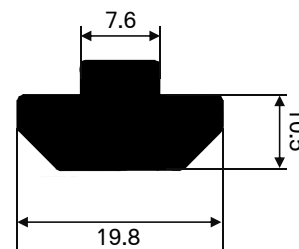
| Tongye Profile no. | Mass of inertia. cm <sup>4</sup> |      | Weight<br>kg/m |
|--------------------|----------------------------------|------|----------------|
|                    | lx                               | ly   |                |
| TY-8-15.6-8.5      | 0.10                             | 0.33 | 0.32           |



## T type aluminum

Aluminum: 6063-T5 (EN-AW-6063).  
Length(m) = 6 Silver Anodizing  
Section Modulus(cm<sup>3</sup>): Zx:0.31 Zy:0.55

| Tongye Profile no. | Mass of inertia. cm <sup>4</sup> |      | Weight<br>kg/m |
|--------------------|----------------------------------|------|----------------|
|                    | lx                               | ly   |                |
| TY-8-19.8*10.5     | 0.18                             | 0.60 | 0.45           |





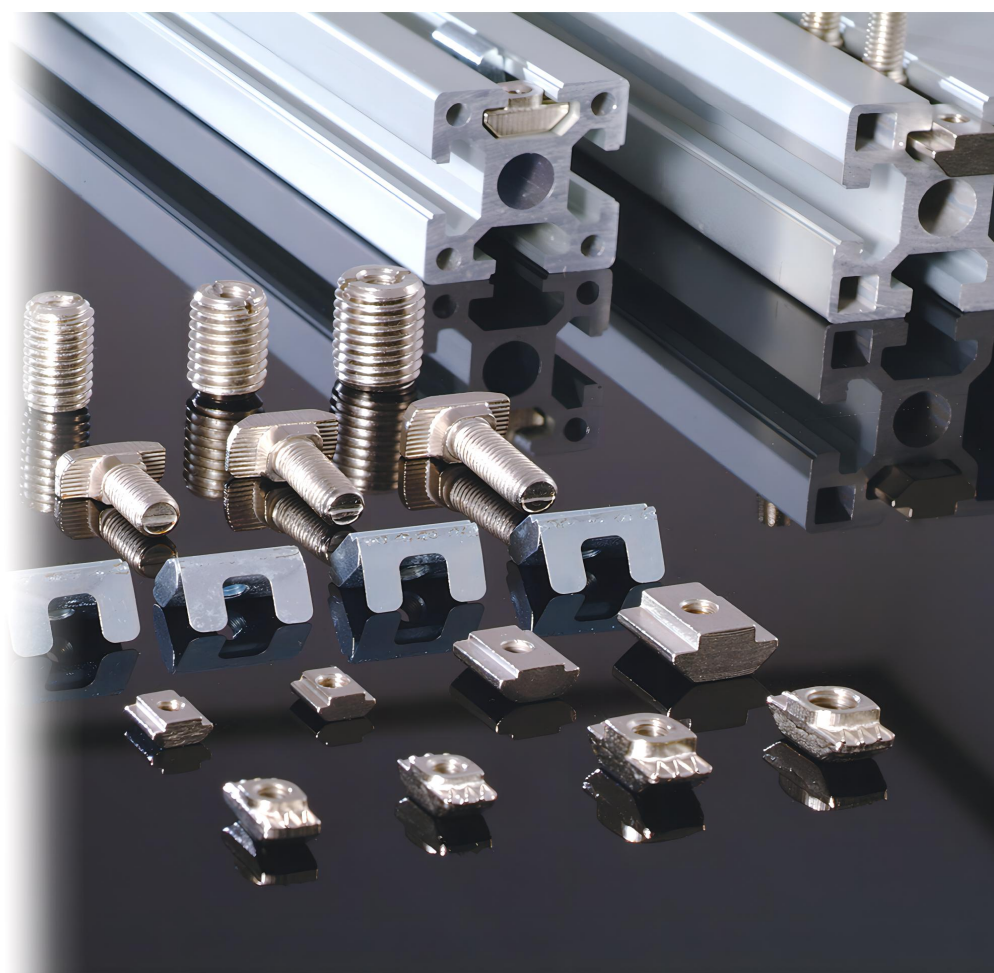


## Aluminum Profile Accessories

Aluminium Profile Accessories are necessary for assembling aluminium profile frames. Standard T-slot aluminium profiles are divided into several series. (such as 20 series, 30 series etc.) And its accessories are also divided into series.

Generally speaking, aluminium extrusion profile accessories cover bolt, nut, connector, hinge and caster, etc.

TONGYE Aluminium solutions, a reliable aluminium profile accessories manufacturer, has more than 20 years of experience in custom aluminum profiles accessories manufacturing and owns a large inventory of equipment and tooling used to produce aluminum profiles accessories. Our advanced machines & combination of experience and expertise mean that we can always offer you affordable and quality aluminium profiles accessories products at any time.







## Angle aluminium profile 45°

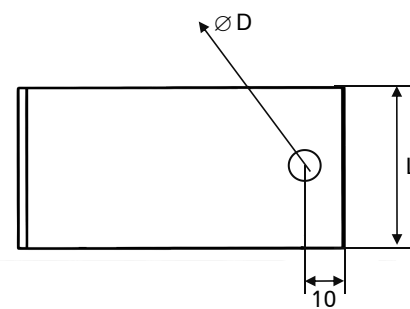
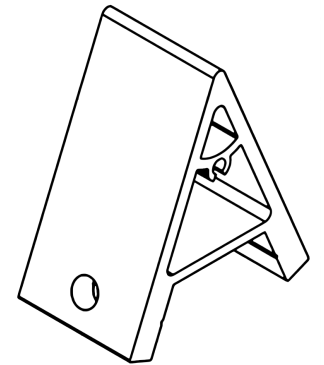
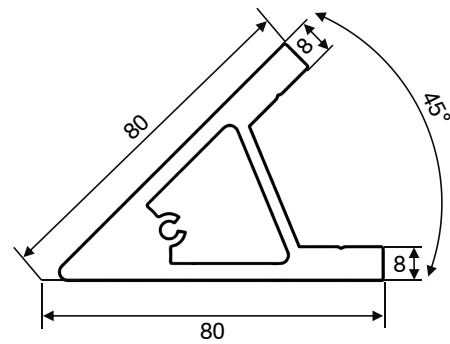
Material:  
Aluminum: 6063-T5 (EN-AW-6063).

Applications:  
Commonly used in parts or profiles and profiles 45 degrees angled connection, play a supporting role, the material is extruded aluminum profiles, L length arbitrary strong, the longest up to 6 meters, and in the side of the tapping position, can be used to install the sealing plate.

Order No:

|           |        |          |
|-----------|--------|----------|
| 30 Series | TY-45° | AC-8-30  |
| 40 Series | TY-45° | AC-8-40  |
| 45 Series | TY-45° | AC-10-45 |

|           | L  | D     | M  |
|-----------|----|-------|----|
| 30 Series | 28 | Ø 6.5 | M6 |
| 40 Series | 38 | Ø 6.5 | M6 |
| 45 Series | 43 | Ø 8.5 | M8 |



## Angle aluminium profile 135°

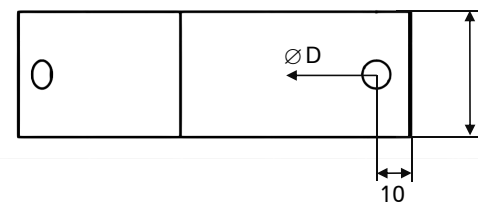
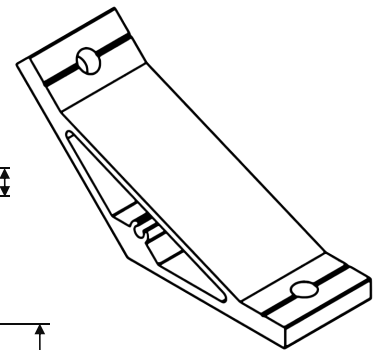
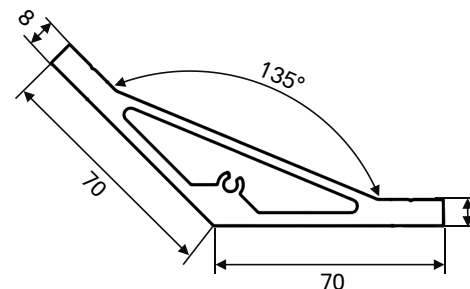
Material:  
Aluminum: 6063-T5 (EN-AW-6063).

Applications:  
Commonly used in parts or profiles and profiles 135 degrees angled connection, play a supporting role, the material is extruded aluminum profiles, L length arbitrary strong, the longest up to 6 meters, and in the side of the tapping position, can be used to install the sealing plate.

Order No:

|           |         |          |
|-----------|---------|----------|
| 30 Series | TY-135° | AC-8-30  |
| 40 Series | TY-135° | AC-8-40  |
| 45 Series | TY-135° | AC-10-45 |

|           | L  | D     | M  |
|-----------|----|-------|----|
| 30 Series | 28 | Ø 6.5 | M6 |
| 40 Series | 38 | Ø 6.5 | M6 |
| 45 Series | 43 | Ø 8.5 | M8 |







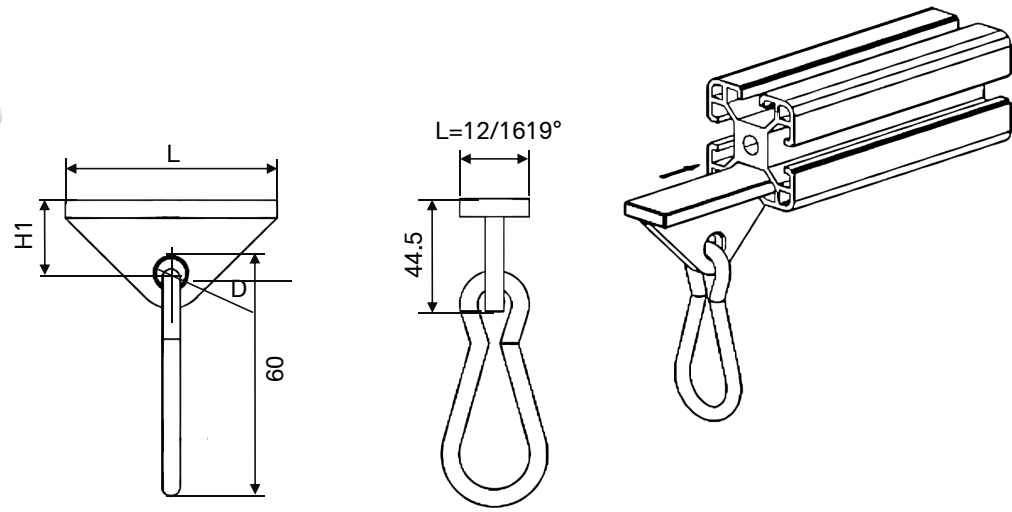
## Silde Hook

Material:  
 Slider: Nylon (zinc alloy)  
 Hook: Zinc-plated steel (stainless steel)

Applications:  
 The movable hook can be inserted into the groove of the profile and slid back and forth to hook various tools, wires and other objects.

Order No:

- TY-SH-6
- TY-SH-8



|         | L    | W    | W1  | H    | H1   | H2  | D     |
|---------|------|------|-----|------|------|-----|-------|
| TY-SH-6 | 56   | 9.8  | 5   | 26.6 | 18.5 | 3.2 | Ø 9.3 |
| TY-SH-8 | 69.5 | 15.8 | 7.6 | 39.8 | 30   | 5.7 | Ø 9.6 |

## Composite Casters

Material:  
 Chrome Steel/TPU or PA.

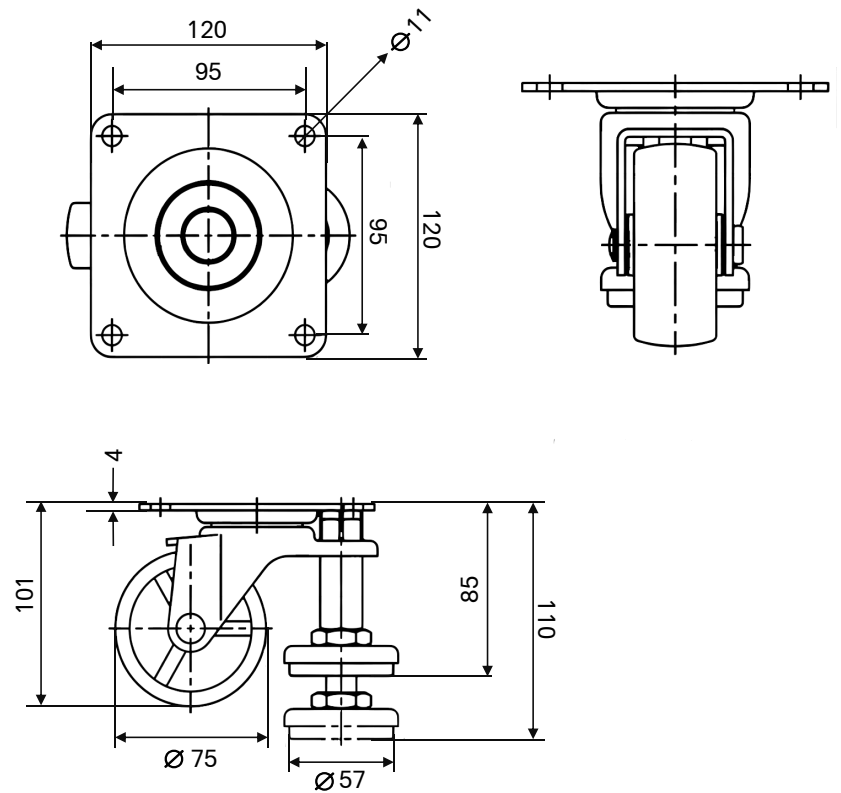
Applications:  
 It is used for the load of heavy structure, the height adjustment feet and casters are assembled together, both can adjust the height and move easily.

Order No:

Max Loading

TY-CW75D

160KG



|          | L   | L1 | H      | H1  | D    | D1   | D2   | T  |
|----------|-----|----|--------|-----|------|------|------|----|
| TY-CW75D | 120 | 95 | 85-115 | 102 | Ø 75 | Ø 57 | Ø 11 | 46 |





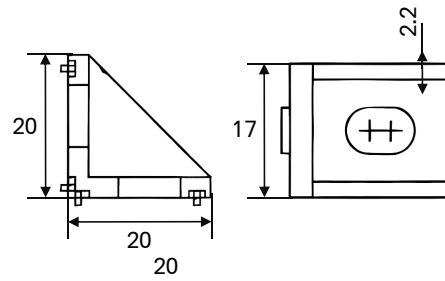
## Gussett Element

Material:  
AL-Found

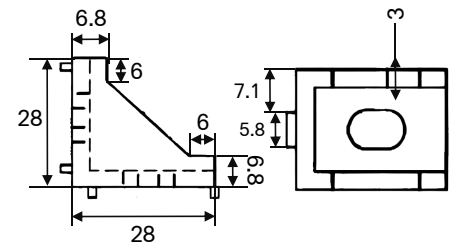
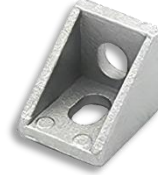
Applications:  
Commonly used for the support and fixing of the connection point between the profile and the profile subject to strong force or vibration, T-bolt and flange nut for the connection need to be equipped separately.

Order No:

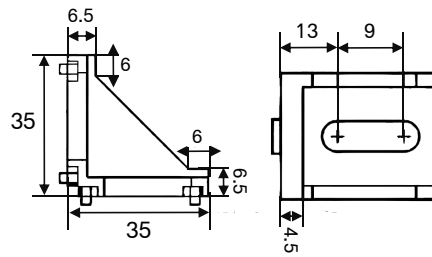
|         |              |
|---------|--------------|
| 2020-6  | TY-SB2020-6  |
| 2028-6  | TY-SB2028-6  |
| 3030-8  | TY-SB3030-8  |
| 3060-8  | TY-SB3060-8  |
| 4040-8  | TY-SB4040-8  |
| 4080-8  | TY-SB4080-8  |
| 4590-10 | TY-SB4590-10 |
| 8080-8  | TY-SB8080-8  |
| 9090-10 | TY-SB9090-10 |



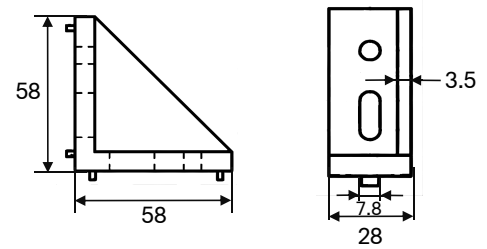
SB2020-6



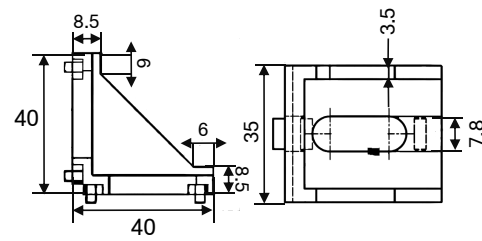
SB2028-6



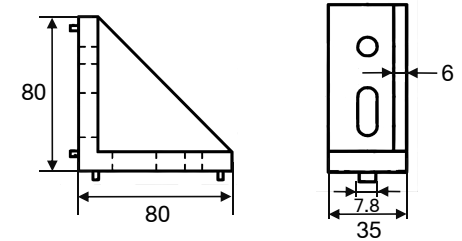
SB3030-8



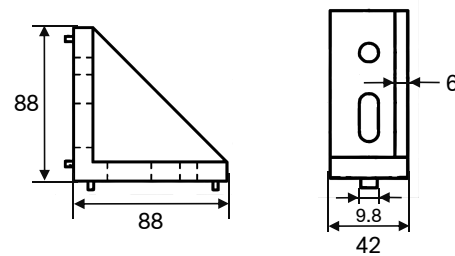
SB3060-8



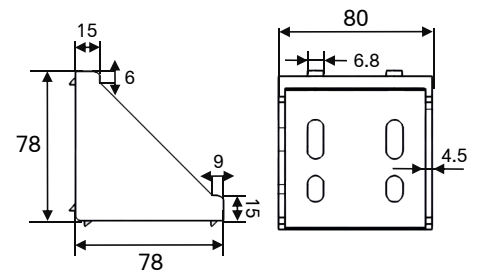
SB4040-8



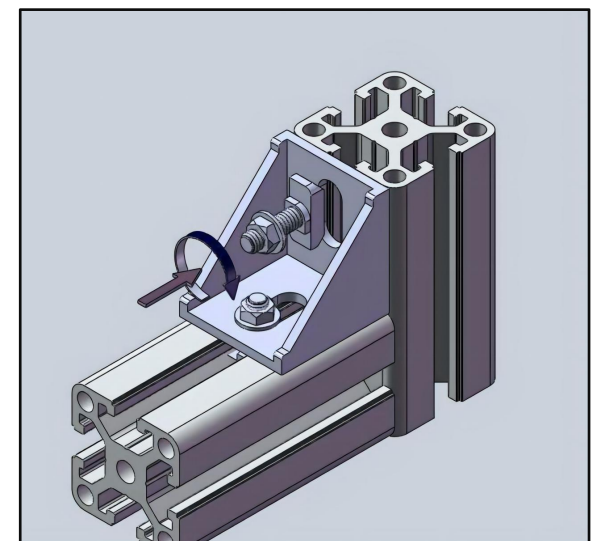
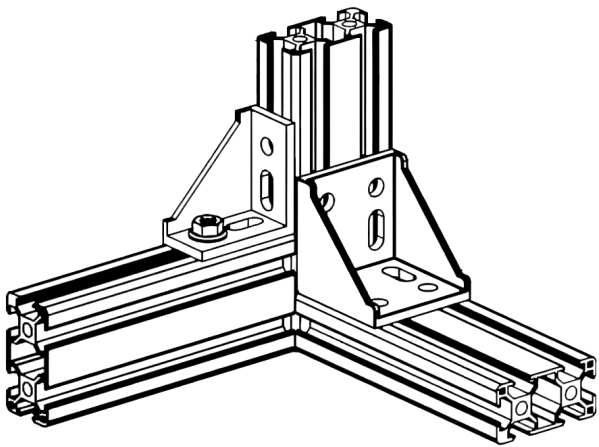
SB4080-8



SB4590-10



SB8080-8







# Interior Bracket

**Material:**  
ZN-AL Alloy or Galvanized Steel

**Applications:**  
Used for right angle connection of two profiles, insert the two ends into the profile groove pit respectively and lock the fastening screws during installation, choose different angle groove couplers according to the groove width of the profile and the connection mode

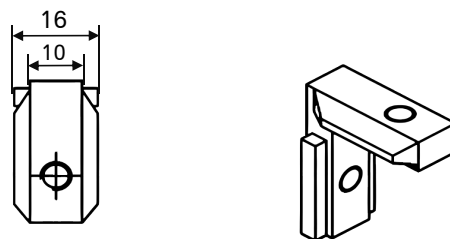
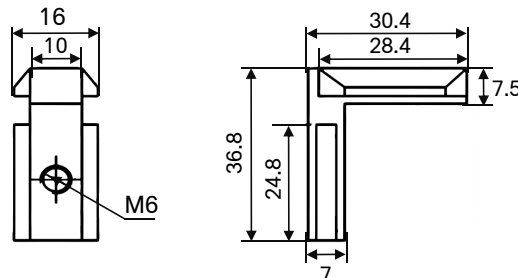
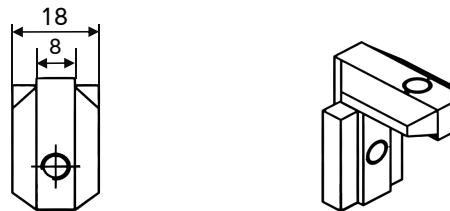
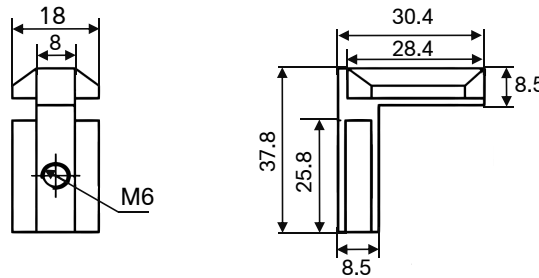
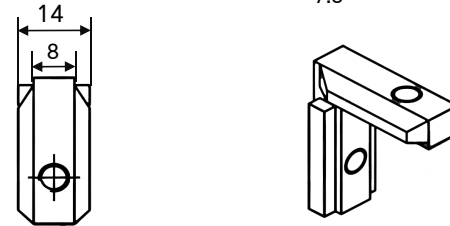
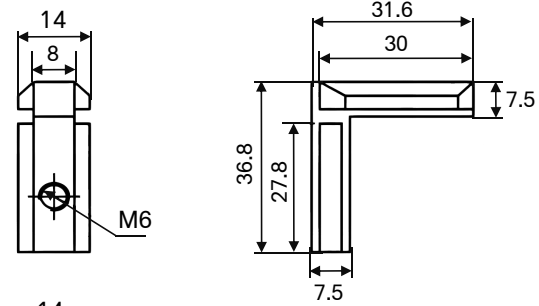
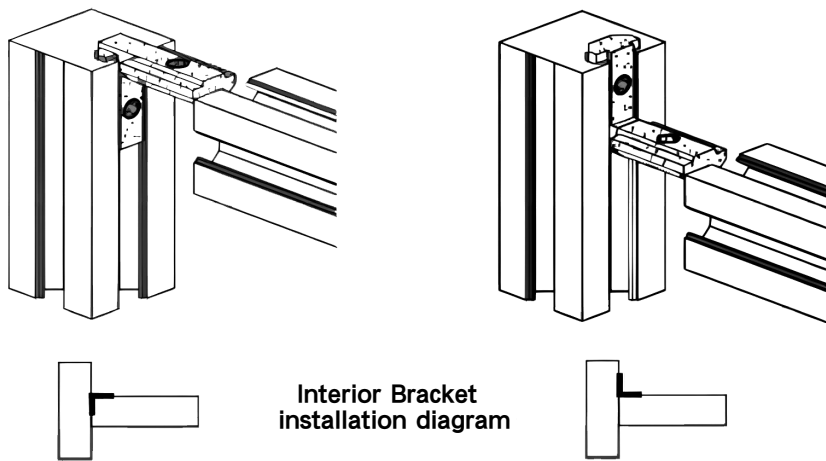
Order No:

- 30 Series TY-IB3238M6-8-30E
- 30 Series TY-IB3238M6-9-30L

- 40 Series TY-IB3238M6-8-40E
- 40 Series TY-IB3238M6-8-40L

- 45 Series TY-IB3238M8-10-45E
- 45 Series TY-IB3238M8-10-45L

|           | L    | L1  | L2  | W    | W1   | H    | Mx |
|-----------|------|-----|-----|------|------|------|----|
| 30 Series | 14.8 | 7.7 | 7.5 | 37.2 | 25.2 | 31.4 | M6 |
| 40 Series | 19   | 8   | 8.7 | 37.5 | 24.4 | 31.4 | M6 |
| 45 Series | 19   | 10  | 8   | 37.8 | 24.4 | 31.5 | M8 |

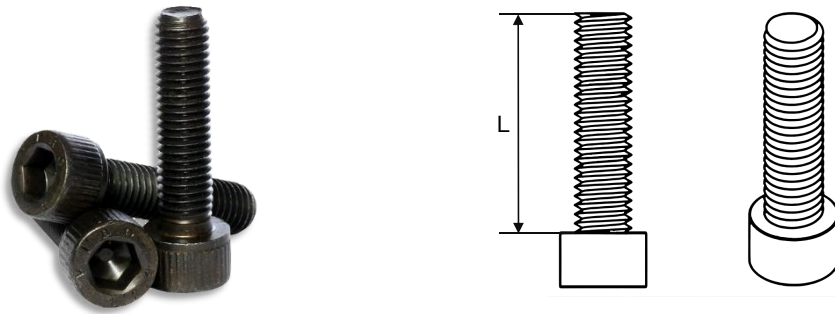




## Core Screw

**Material:**  
12.9 High strength alloy Steel or Stainless Steel/Galvanized Steel

**Applications:**  
Commonly used for high-strength connection of two sections, the connection requires drilling at a predetermined location



Order No:

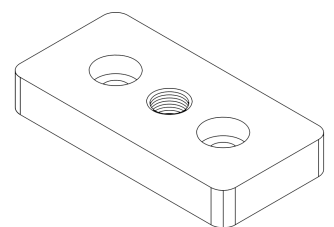
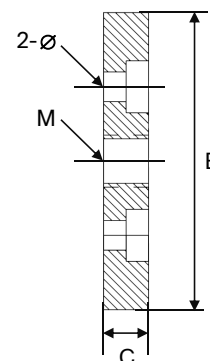
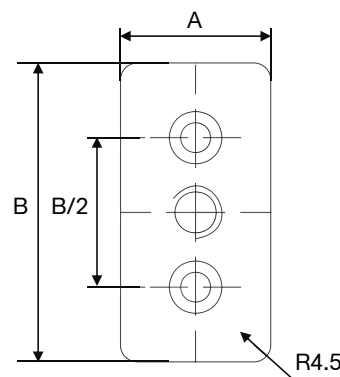
|              |
|--------------|
| TY-CSM8x40   |
| TY-CSM8x60   |
| TY-CSM8x80   |
| TY-CSM12x50  |
| TY-CSM12x60  |
| TY-CSM12x80  |
| TY-CSM12x100 |



## End Connector

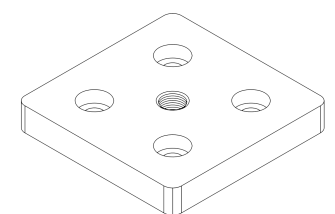
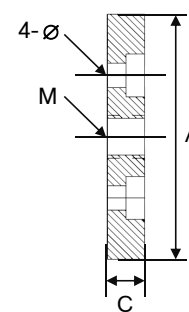
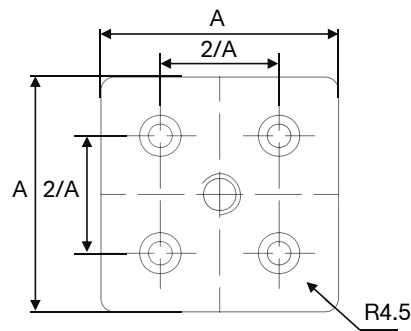
**Material:**  
AL-Alloy

**Applications:**  
End connector mainly used for rectangular and large size porous square profiles and accessories such as shoe feet and casters, to play an excessive role when connecting



Order No:

|         |               |
|---------|---------------|
| 30x60   | TY-L3060-M10  |
| 60x60-8 | TY-L6060-M12  |
| 40x80   | TY-L4080-M12  |
| 45x90   | TY-L4590-M12  |
| 80x80   | TY-EL8080-M12 |
| 90x90   | TY-EL9090-M16 |
| 50x100  | TY-L50100-M16 |
| 100x100 | EL100100-M20  |

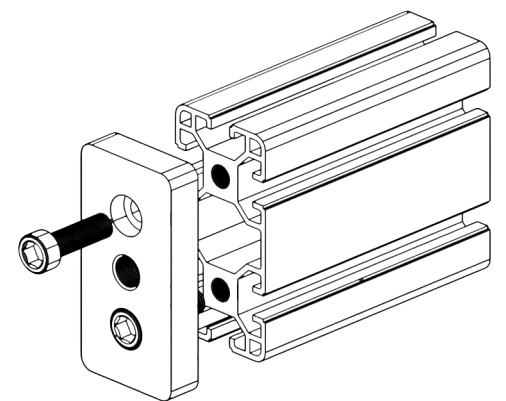


|               | A  | B   | C  | M  | Ø  |
|---------------|----|-----|----|----|----|
| TY-L3060-M10  | 30 | 60  | 15 | 10 | 9  |
| TY-L4080-M12  | 40 | 80  | 15 | 12 | 9  |
| TY-L4590-M12  | 45 | 90  | 15 | 12 | 13 |
| TY-L50100-M16 | 50 | 100 | 15 | 16 | 13 |

Unit: mm

|                 | A   | C  | M  | Ø     |
|-----------------|-----|----|----|-------|
| TY-EL6060-M12   | 60  | 15 | 12 | 9     |
| TY-EL8080-M12   | 80  | 15 | 12 | 9     |
| TY-EL9090-M16   | 90  | 15 | 16 | 13    |
| TY-EL100100-M20 | 100 | 20 | 20 | 13/15 |

Unit : mm







## End Cap

Material:  
Nylon

Color: Black/Light Grey

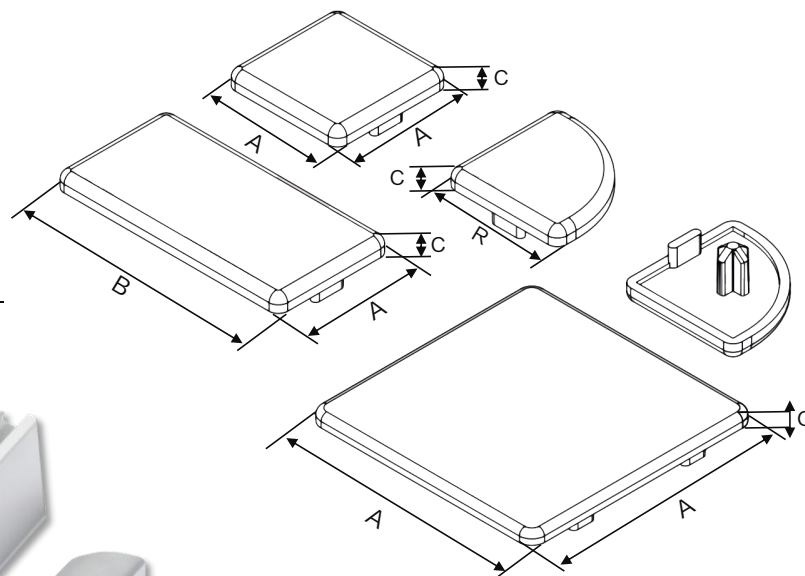
Applications:  
Installed on the end face of the profile to increase both aesthetics and safety

Order No:

|       |             |         |                |
|-------|-------------|---------|----------------|
| 15x30 | TY-EC1530   | 88x40Z  | TY-EC8840Z     |
| 16x40 | TY-EC1640   | 45x45   | TY-EC4545      |
| 20x20 | TY-EC2020   | 45x60   | TY-EC4560      |
| 30x30 | TY-EC3030   | 60x60   | TY-EC6060-10   |
| 30x60 | TY-EC3060   | 60x90   | TY-EC6090      |
| 30x90 | TY-EC3090   | 45x90   | TY-EC4590      |
| 60x60 | TY-EC6060-8 | 90x90   | TY-EC9090      |
| 40x40 | TY-EC4040   | 50x50   | TY-EC5050-8    |
| 40x60 | TY-EC4060   | 50x50   | TY-EC5050-10   |
| 40x80 | TY-EC4080   | 50x100  | TY-EC50100     |
| 80x80 | TY-EC8080   | 100x100 | TY-EC100100    |
| 88x40 | TY-EC8840   | 100x100 | TY-EC100100-10 |



TY-EC 30 60  
A B  
C=4mm



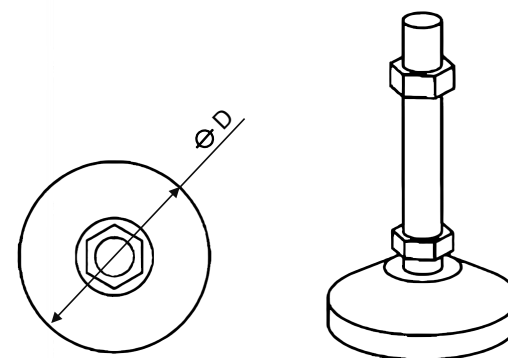
## Articula Foot

Material:  
Basement-Nylon  
Autivibration version-Rubber  
Threaded Rod-Stainless Steel or Zine plated steel

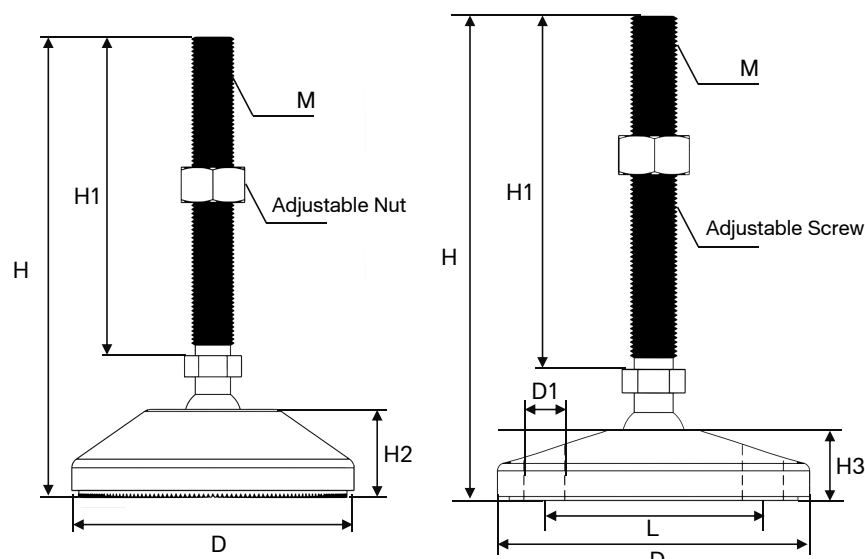
Applications:  
used for all kinds of industrial aluminum profile bracket equipment common accessories, with support, shockproof and other functions. Adjustable height of the screw

Order No:

|               |                 |                 |
|---------------|-----------------|-----------------|
| TY-FT8x50-40R | TY-FT10x80-50R  | TY-FT12x100-80R |
| TY-FT8x50-50R | TY-FT12x100-50R | TY-FT16x100-80R |
| TY-FT8x80-50R | TY-FT8x80-80R   | TY-FT20x100-80R |
| TY-FT8x80-80R | TY-FT10x100-80R | TY-FT24x100-80R |



|                     | H    | H1  | H2    | L  | D        | D1   | M  | Max Load |
|---------------------|------|-----|-------|----|----------|------|----|----------|
| TY-FT8x50-40R       | 83.5 | 50  | 20    | ▲  | ∅ 40     | ▲    | 8  | 750kg    |
| TY-FT8x50-50R       | 83.5 | 50  | 20    | ▲  | ∅ 50     | ▲    | 8  | 800kg    |
| TY-FT8x80-50/80R    | 115  | 80  | 20    | ▲  | ∅ 50/80  | ▲    | 8  | 800kg    |
| TY-FT10x80-50R      | 115  | 80  | 20    | ▲  | ∅ 50     | ▲    | 10 | 1000kg   |
| TY-FT12x100-50R     | 131  | 100 | 20    | ▲  | ∅ 50     | ▲    | 12 | 1200kg   |
| TY-FT8x100-80R      | 131  | 100 | 18    | 55 | ∅ 80     | ∅ 10 | 8  | 1000kg   |
| TY-FT10x100-80R     | 131  | 100 | 18    | 55 | ∅ 80     | ∅ 10 | 10 | 1200kg   |
| TY-FT12x100-80R     | 131  | 100 | 18    | 55 | ∅ 80     | ∅ 10 | 12 | 1500kg   |
| TY-FT16x100-80/100R | 150  | 100 | 25/31 | 74 | ∅ 80/100 | ∅ 10 | 16 | 1600kg   |
| TY-FT20x100-80/100R | 150  | 100 | 25/31 | 74 | ∅ 80/100 | ∅ 10 | 20 | 1800kg   |
| TY-FT24x100-100R    | 150  | 100 | 31    | 74 | ∅ 100    | ∅ 10 | 24 | 2000kg   |





## Flange Nut

**Material:**  
Stainless Steel/Steel(Galvanized or Chrome)

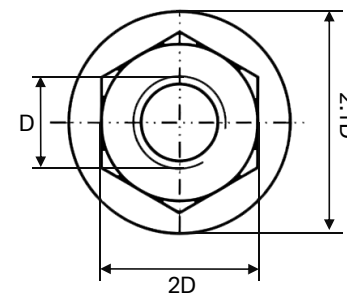
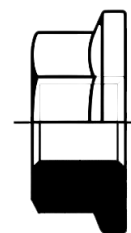
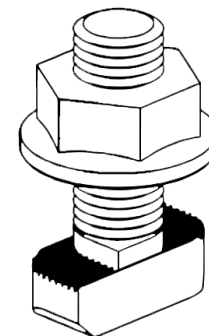
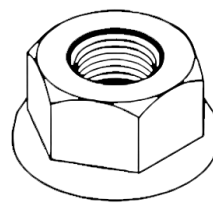
**Applications:**  
Used in conjunction with T-bolts to install corner pieces and other profile accessories

Order No:

|          |
|----------|
| TY-FN-M6 |
| TY-FN-M8 |

D: Outside diameter of thread

|          | D  | 2D  | 2.1D |
|----------|----|-----|------|
| TY-FN-M6 | 38 | 6.5 | M6   |
| TY-FN-M8 | 43 | 8.5 | M8   |



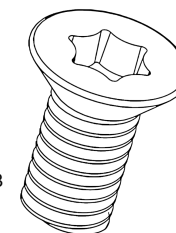
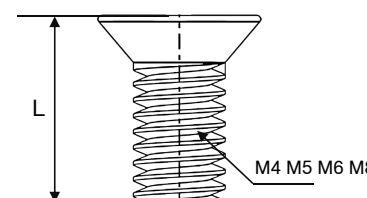
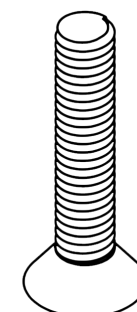
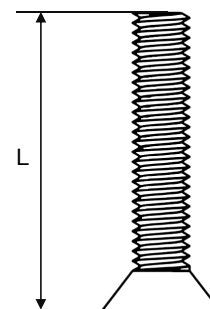
## Sunkscrew

**Material:**  
12.9 High strength alloy Steel or Stainless Steel/Galvanized Steel

**Applications:**  
Used for T-nut fit, often used in the connection of decorative parts and profiles such as the top, door suction, handle, etc.

Order No:

|              |
|--------------|
| TY-SSM4 x 10 |
| TY-SSM5 x 10 |
| TY-SSM6 x 10 |
| TY-SSM6 x 12 |
| TY-SSM6 x 16 |
| TY-SSM6 x 20 |
| TY-SSM8 x 16 |







## Spring Fastener

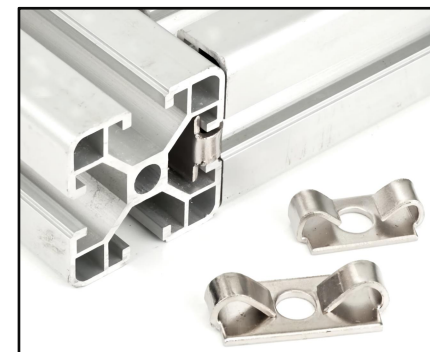
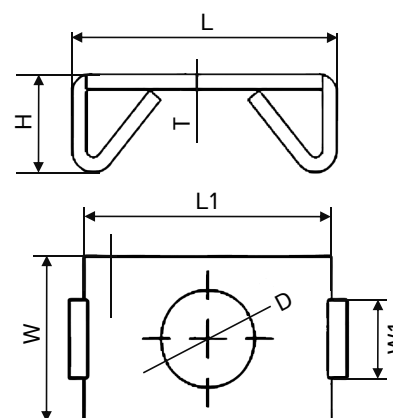
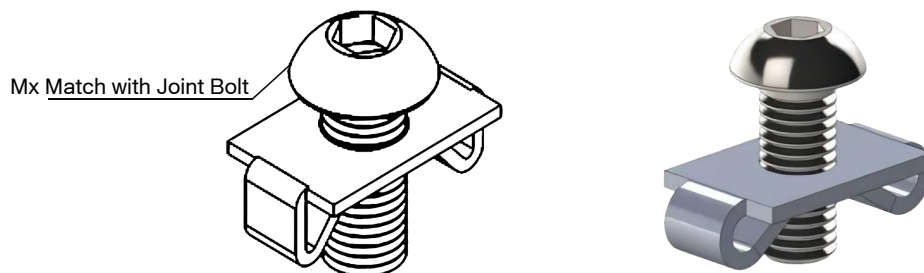
**Material:**  
Galvanized or Chrome Steel

**Applications:**  
Spring Fastener is a special connector for -8/-10 series profiles. When two profiles are connected at right angles, it is inserted into the groove of a section of the profile and used with special bolts, this connection is tight and reliable, and this accessory has the function of anti-loosening and anti-vibration.

Order No:

- TY-SF30
- TY-SF40
- TY-SF45

|         | L  | W  | H   | L1 | W1 | D   | T   | Mx  |
|---------|----|----|-----|----|----|-----|-----|-----|
| TY-SF30 | 24 | 15 | 8.8 | 23 | 8  | 8.2 | 1.5 | M8  |
| TY-SF40 | 32 | 16 | 9.5 | 25 | 8  | 8.2 | 2   | M8  |
| TY-SF45 | 38 | 21 | 13  | 33 | 10 | 12  | 2   | M12 |



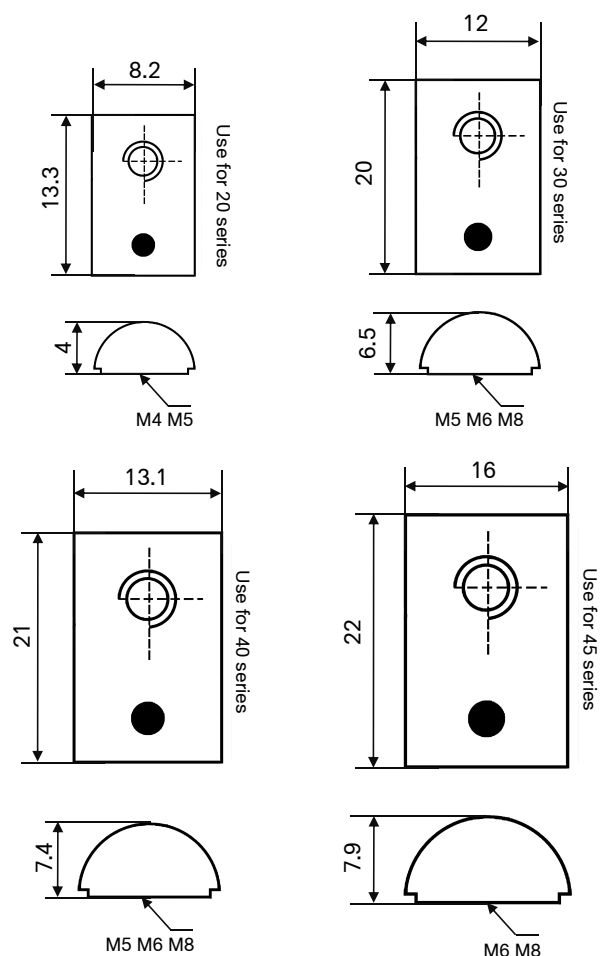
## Half Round Nut

**Material:**  
Nickel or Chrome Steel

**Applications:**  
The half-round nut can be inserted directly into any assembly point in the recess of the aluminum profile and is held in place by a spring steel ball on its back, making installation very easy and reliable; it is one of the most used accessories in profile joining

Order No:

- 20 series** TY-HRN4-6-20  
TY-HRN5-6-20
- 30 series** TY-HRN4-8-30  
TY-HRN5-8-30  
TY-HRN6-8-30  
TY-HRN8-8-30
- 40 series** TY-HRN4-8-40  
TY-HRN5-8-40  
TY-HRN6-8-40  
TY-HRN8-8-40
- 45 series** TY-HRN6-10  
TY-HRN8-6-10





## Foundation Bracket

Material:  
Galvanized Steel

Applications:  
The foot support for the profile bracket is selected according to the size of the profile, and the bolts and nut blocks for the connection and the expansion bolts need to be equipped separately.

Order No:

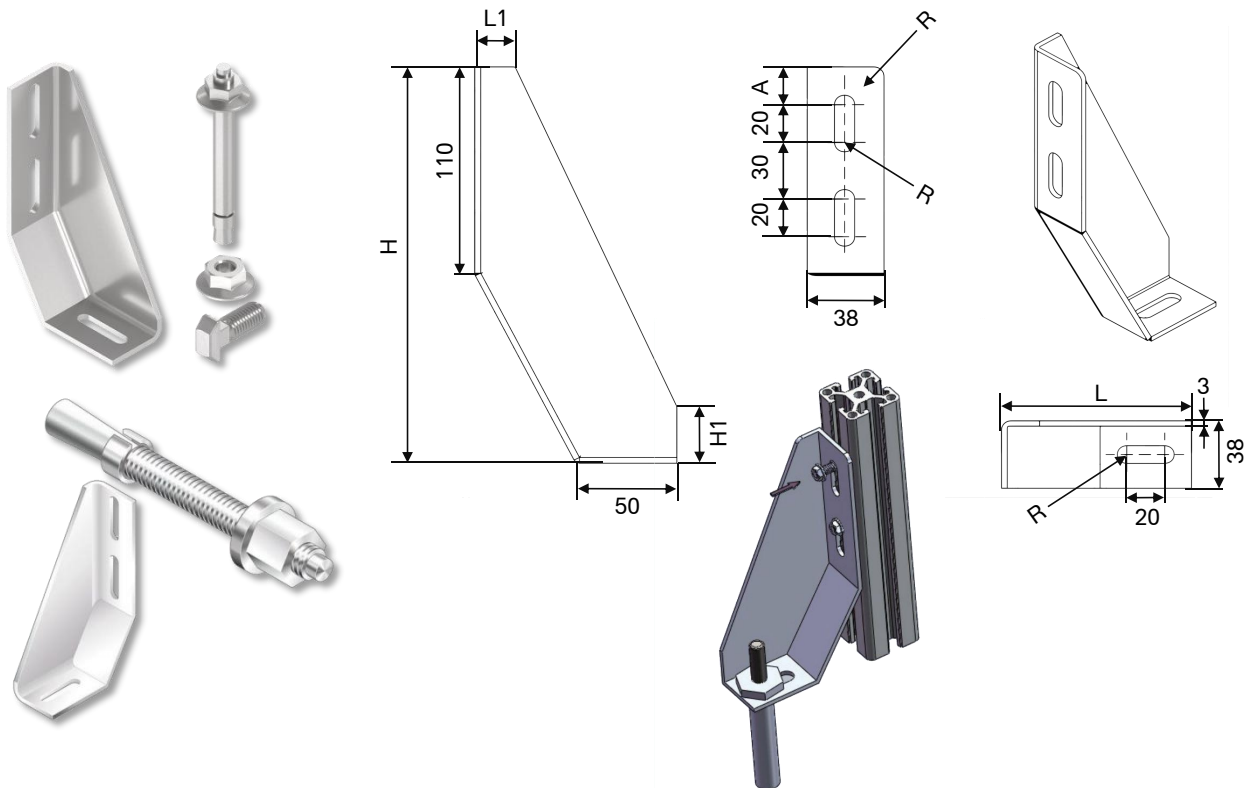
30/40 series TY-FB50100L

TY-FB50100R

40/50/60 series TY-FB90210L

TY-FB90210R

|               | L   | L1 | H   | H1 | A  | R |
|---------------|-----|----|-----|----|----|---|
| TY-FB50100L/R | 80  | 15 | 170 | 25 | 19 | 4 |
| TY-FB90210L/R | 100 | 20 | 210 | 30 | 20 | 5 |



## Handle

Material:  
PVC&Al-Alloy

Applications:  
The handle is mounted on the profile for easy opening and carrying, the connecting bolt and T-nut need to be equipped separately

Order No:

PVC TY-HD-19

TY-HD-26

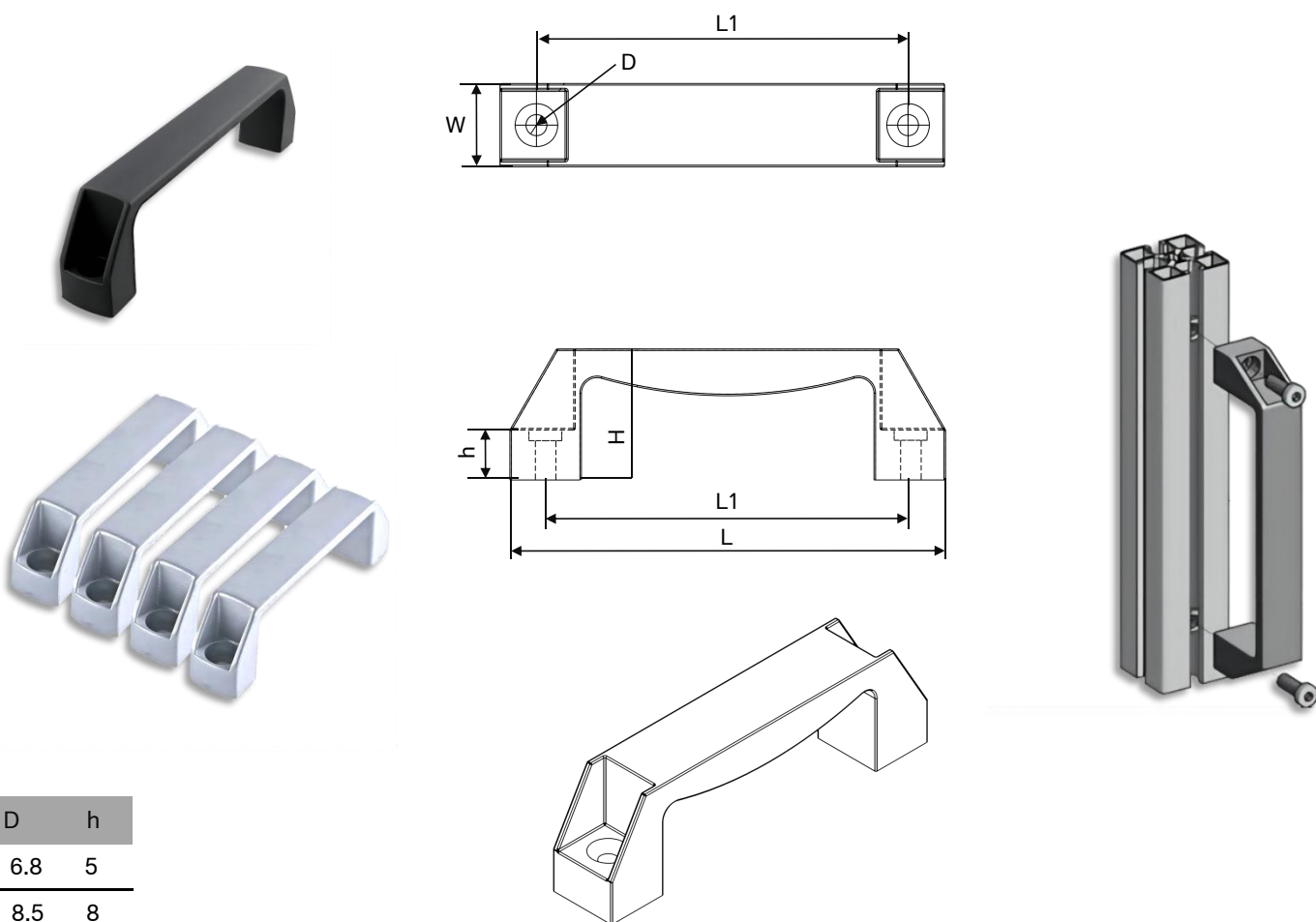
TY-HD-28

Al-Alloy TY-HD-19AL

TY-HD-26AL

TY-HD-28AL

| PVC/Al-Alloy | L   | L1      | H  | W  | D     | h |
|--------------|-----|---------|----|----|-------|---|
| TY-HD-19     | 110 | 88/90   | 38 | 19 | ∅ 6.8 | 5 |
| TY-HD-26     | 136 | 118/120 | 45 | 26 | ∅ 8.5 | 8 |
| TY-HD-28     | 198 | 179/180 | 50 | 28 | ∅ 8.5 | 8 |



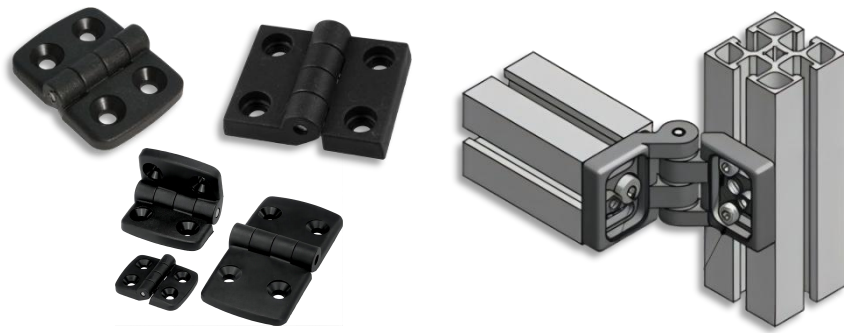




## Hinge

Material:  
Nylon

Applications:  
For connecting profiles to profiles or movable connections between plates, connection screws and nuts need to be provided separately

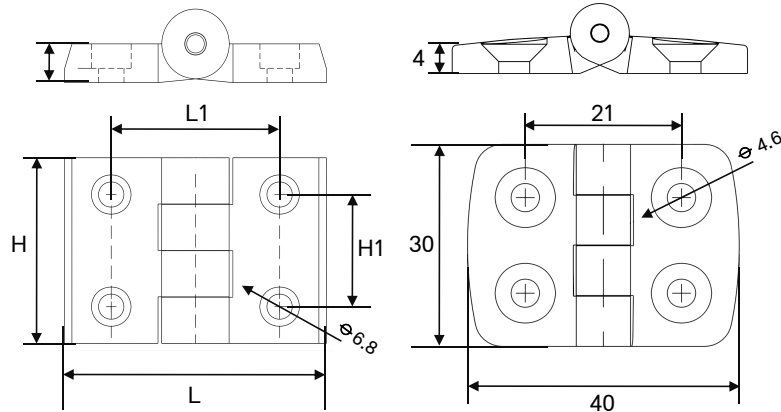


Use for 30/40/50 series

Use for 20 series

Order No:

|       |             |
|-------|-------------|
| 20x20 | TY-H2020-6  |
| 30x30 | TY-H3030-8  |
| 30x40 | TY-H3040-8  |
| 40x40 | TY-H4040-8  |
| 45x45 | TY-H4545-10 |



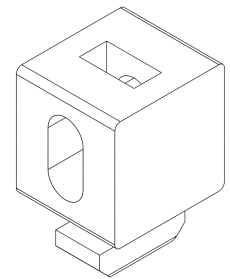
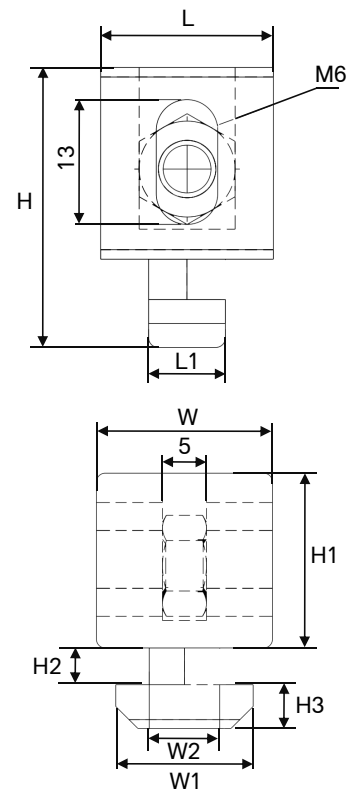
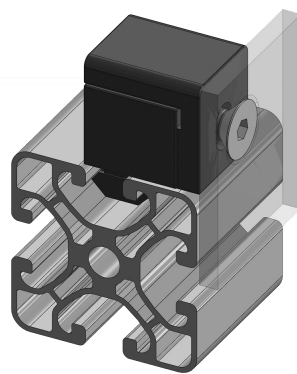
|             | L    | L1   | H    | H1   | T   | h |                |
|-------------|------|------|------|------|-----|---|----------------|
| TY-H3030-8  | 52.5 | 31   | 44.2 | 23.6 | 7.8 |   | SSM6*16/TN6-8  |
| TY-H3034-8  | 59   | 35   | 44.5 | 23   | 7.8 |   | SSM6*16/TN6-8  |
| TY-H4040-8  | 61.5 | 40.3 | 49.5 | 30   | 10  | 4 | CSM6*16/TN6-8  |
| TY-H4545-10 | 70   | 45   | 50   | 30   | 10  | 5 | CSM6*20/TN6-10 |

## Multi Block

Material:  
PVC

Color: Black, Grey, Transparent

Applications:  
Insert the end of this connecting block directly into the profile groove, turn it 90 degrees and then it can be tightly fixed on the profile, then you can install various panels such as Plexiglas on the profile, and then lock it with bolts, which is simple to install and easy to disassemble.



Order No:

|           |             |
|-----------|-------------|
| 30 series | TY-MB6-8-30 |
| 40 series | TY-MB6-8-40 |
| 45 series | TY-MB6-10   |

|             | L  | L1  | W  | W1   | W2  | H    | H1   | H2  | H3  |
|-------------|----|-----|----|------|-----|------|------|-----|-----|
| TY-MB6-8-30 | 20 | 8   | 17 | 13.8 | 8   | 26.3 | 20.2 | 2.4 | 4.2 |
| TY-MB6-8-40 | 18 | 8.2 | 20 | 15.8 | 8.2 | 32.6 | 22.8 | 5   | 5.8 |
| TY-MB6-10   | 18 | 8.2 | 23 | 16.5 | 9.5 | 34   | 22.8 | 6   | 5   |



## Profile Joint

**Material:**  
Zn-Al-Alloy or Galvanized Steel

**Applications:**  
The Profile Joint is used for the movable connection between two profiles with a rotation range of 180 degrees and it is available in a variety of connections.

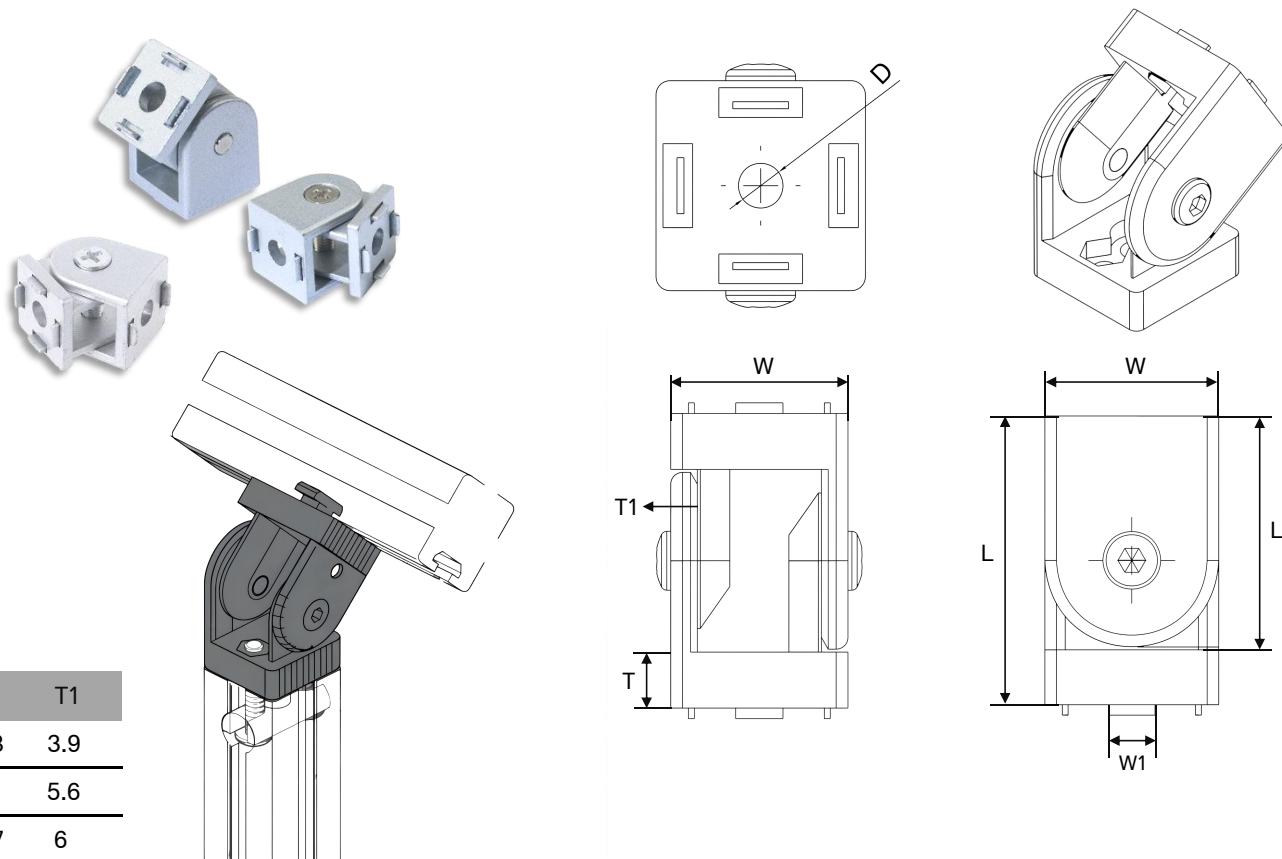
Order No:

30x30 TY-PJ30

40x40 TY-PJ40

45x45 TY-PJ45

|         | L  | L1   | W  | W1  | D    | T   | T1  |
|---------|----|------|----|-----|------|-----|-----|
| TY-PJ30 | 50 | 35.5 | 30 | 7.8 | ∅ 9  | 6.8 | 3.9 |
| TY-PJ40 | 60 | 48.6 | 40 | 7.8 | ∅ 20 | 9   | 5.6 |
| TY-PJ45 | 66 | 53.5 | 45 | 10  | ∅ 13 | 9.7 | 6   |



## Metal Hinge

**Material:**  
Zn-Al-Alloy

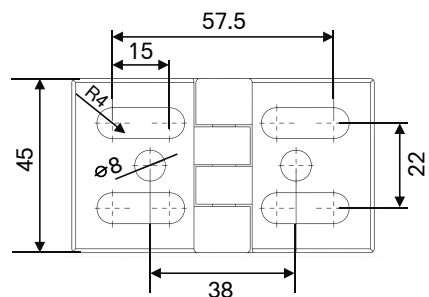
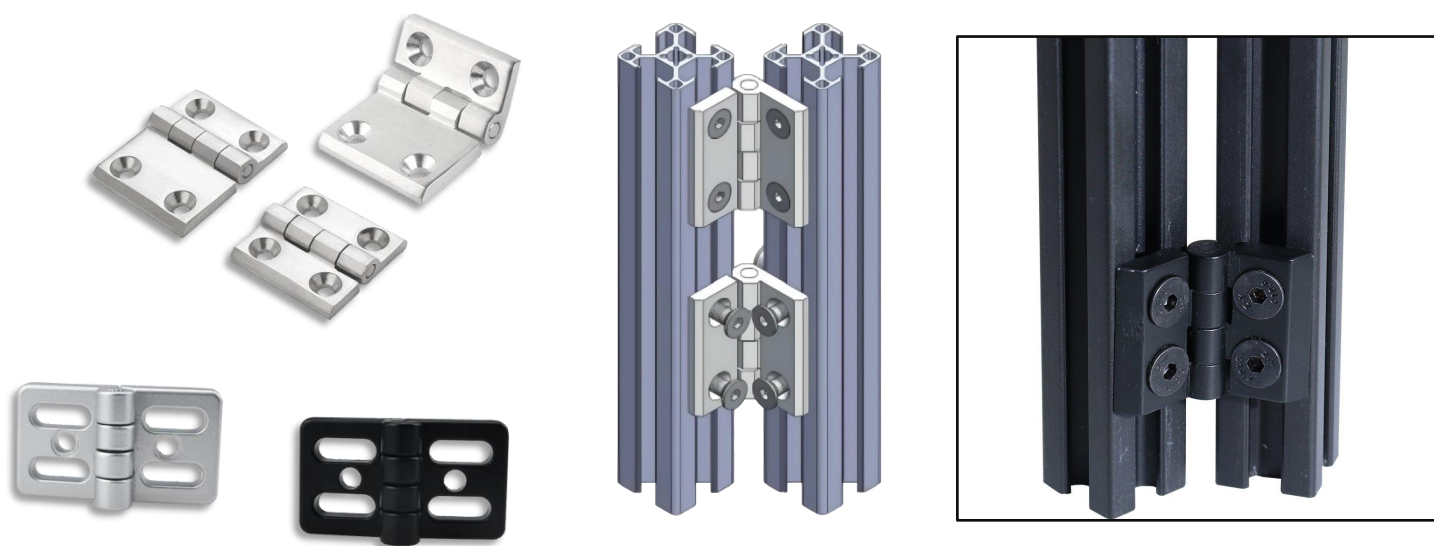
**Applications:**  
The advantages of the metal hinge are its high strength, its ability to carry large stresses, and its freedom of opening and closing.

Order No:

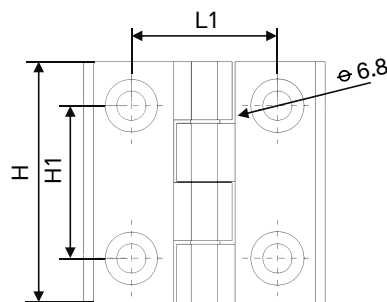
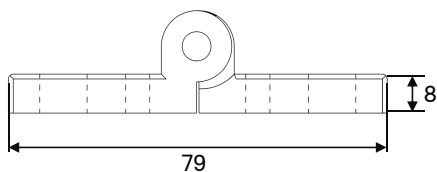
30x30 TY-H3030-8-ZN

40x40 TY-H4040-AL

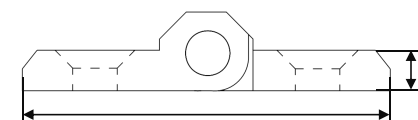
TY-H4040-8-ZN



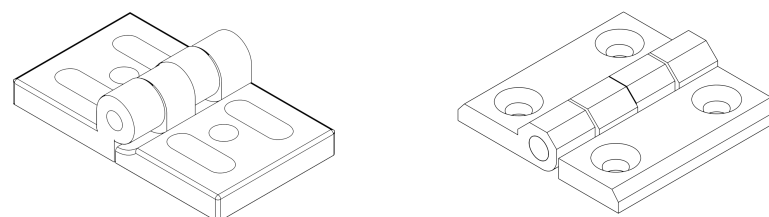
Use for 40 series



Use for 30/40 series



|               | L    | L1 | H    | H1 | T   |                    |
|---------------|------|----|------|----|-----|--------------------|
| TY-H3030-8-ZN | 49.6 | 30 | 49.2 | 30 | 5.5 | TY-SSM6 X 12/TN6-8 |
| TY-H4040-AL   | 62.1 | 40 | 49.8 | 30 | 6.8 | TY-SSM6 X 12/TN6-8 |



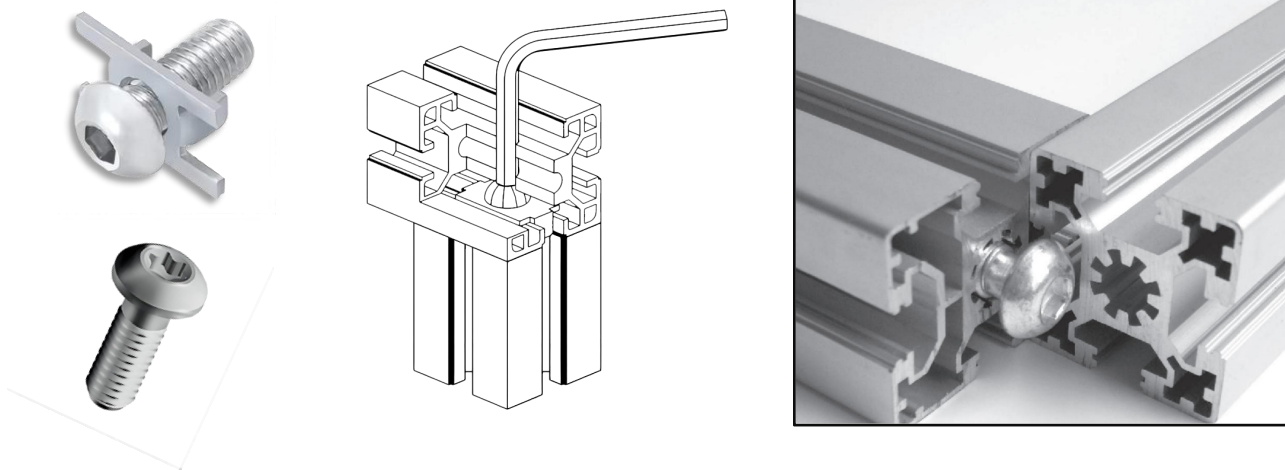




## Joint Bolt

**Material:**  
12.9 High strength alloy Steel or Stainless Steel/Galvanized Steel

**Applications:**  
The industrial profile frame generally adopts the internal connection method, and needs to use a special joint bolt. Before installation, it is necessary to tap the thread and make the process installation hole at the profile connection. In order to prevent loosening and facilitate repeated disassembly, it is recommended to use 12.9 grade high strength alloy steel. Joint Bolt.



Order No:

6 series TY-JB6x10-6

TY-JB6x12-6

TY-JB6x16-6

TY-JB6x20-6

8 series TY-JB8x12-8

TY-JB8x16-8

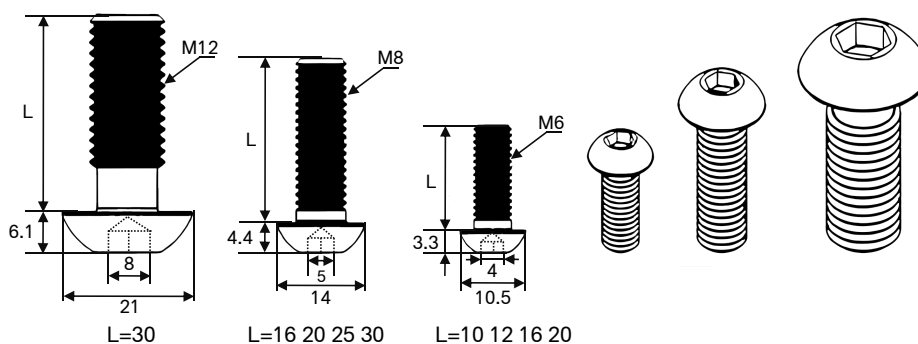
TY-JB8x20-8

TY-JB8x25-8

TY-JB8x30-8

TY-JB12x30-8

10 series TY-JB12x30-10



## Connector Link

**Material:**  
Al-Alloy

**Applications:**  
It is used to lengthen the connection between profiles. When installing, insert the connector link into the groove of the butt joint of the two profiles, and then lock it with a set screw.

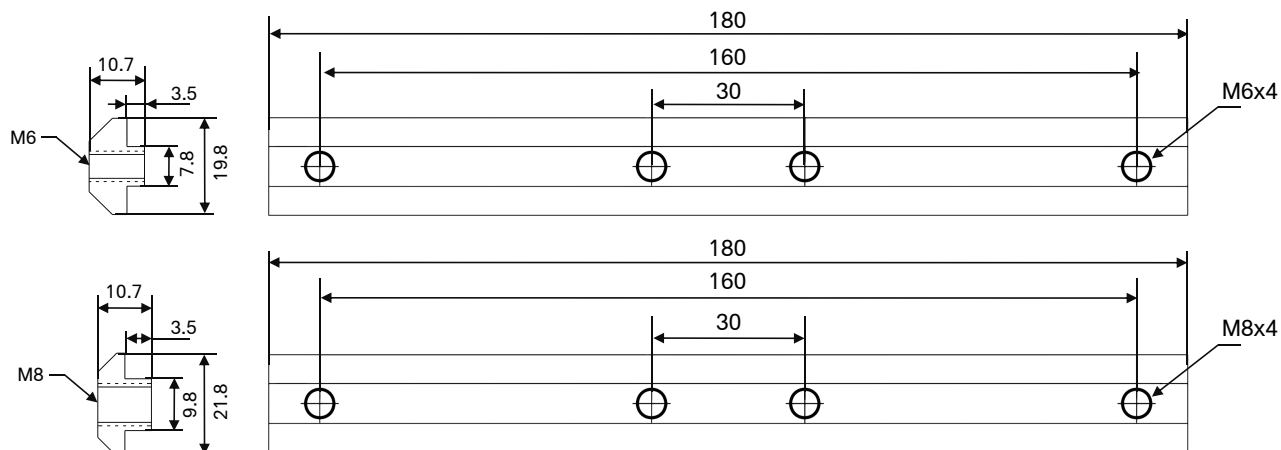
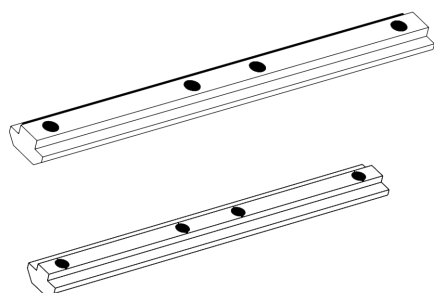


Order No:

8 series TY-CL180M6-8-30

TY-CL180M6-8-40

10 series TY-CL180M8-10





## Sliding Nut

**Material:**  
Galvanized or Nickel Steel

**Applications:**  
When Sliding Nut is installed, it needs to be pre-plugged into the groove of the aluminum profile to connect various accessories on the profile

Order No:

30 series TY-SN5-8-30

TY-SN6-8-30

TY-SN8-8-30

40 series TY-SN5-8-40

TY-SN6-8-40

TY-SN8-8-40

TY-SN5-10

TY-SN6-10

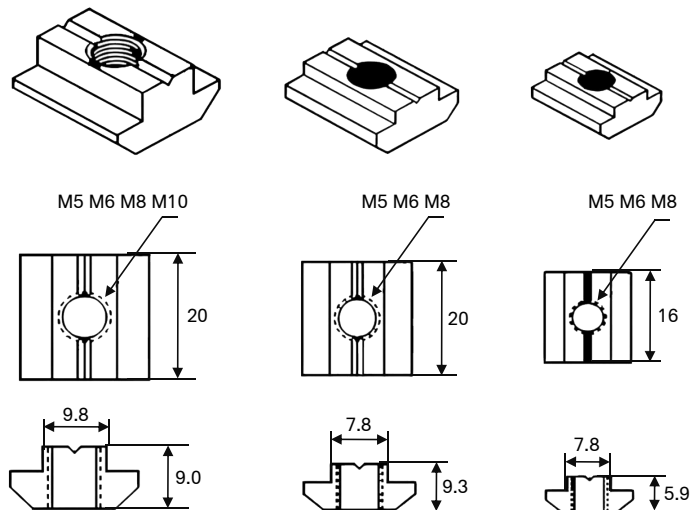
TY-SN8-10

TY-SN10-10

Use for 45 50 series

Use for 40 series

Use for 30 series



## Angle Bracket

**Material:**  
Al-Alloy

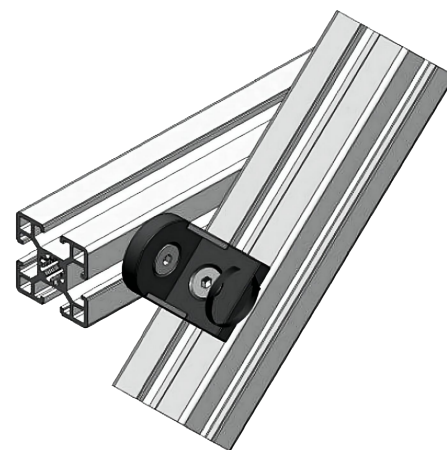
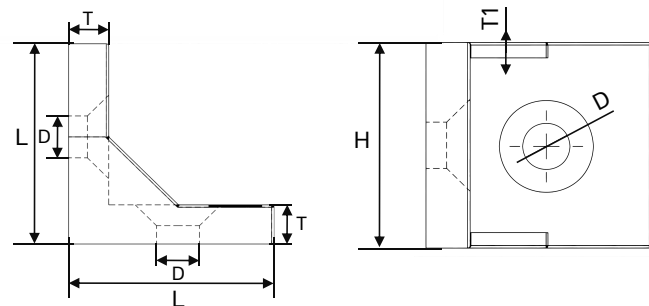
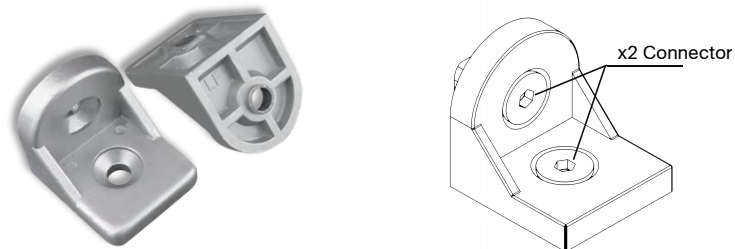
**Applications:**  
The angle bracket is used for the connection of two non-perpendicular profiles. The connecting bolt and nut block need to be ordered separately.

Order No:

30x30 TY-AB3030-8

40x40 TY-AB4040-8

45x45 TY-AB4545-10



|              | L  | H  | T   | T1  | D     |
|--------------|----|----|-----|-----|-------|
| TY-AB3030-8  | 28 | 26 | 4   | 3.7 | ∅ 6.8 |
| TY-AB4040-8  | 37 | 30 | 7.8 | 3.2 | ∅ 8.2 |
| TY-AB4545-10 | 42 | 38 | 7.8 | 3.8 | ∅ 8.2 |

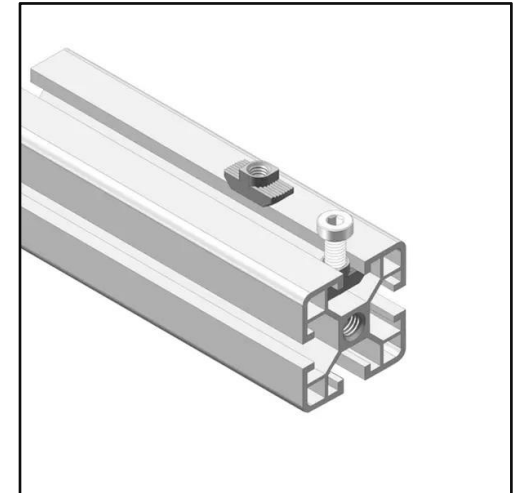
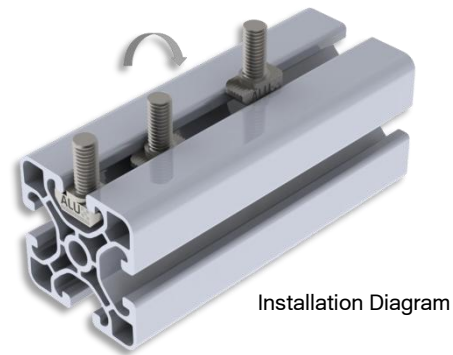




## T-Bolt

**Material:**  
Galvanized or Chrome Steel

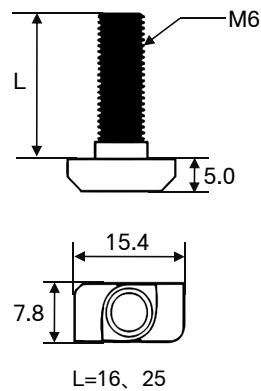
**Applications:**  
T-bolt is directly put into the profile slot. It can be automatically positioned and locked during installation. It is often used in conjunction with flange nut. It is a good helper for installing corner parts and other profile accessories. T-bolt of different specifications and lengths can be selected according to different profiles, slot width and installation requirements



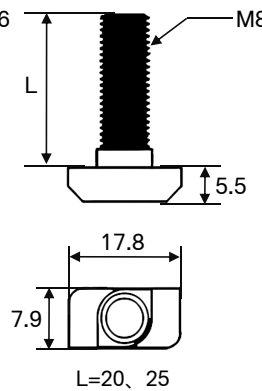
Order No:

|           |              |
|-----------|--------------|
| 30 series | TY-TB6x16-8  |
|           | TY-TB6x25-8  |
| 40 series | TY-TB8x20-8  |
|           | TY-TB8x25-8  |
|           | TY-TB8x30-8  |
|           | TY-TB8x40-8  |
|           | TY-TB8x20-10 |
|           | TY-TB8x25-10 |
|           | TY-TB8x35-10 |
|           | TY-TB8x40-10 |

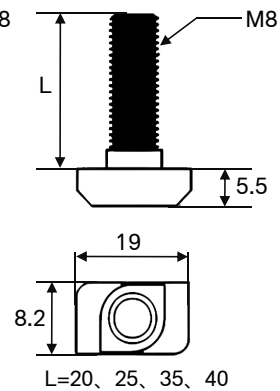
Use for 30 series



Use for 40 series



Use for 40/50/60 series



## T-Nut

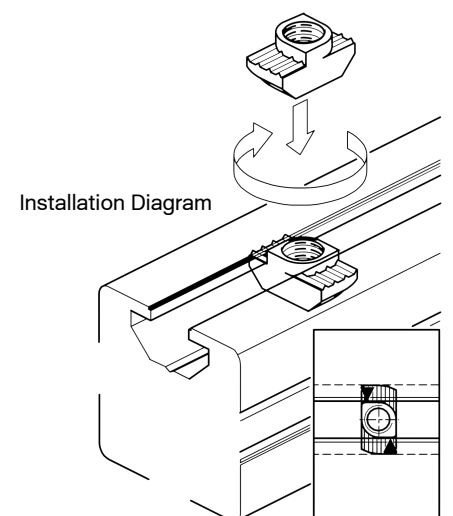
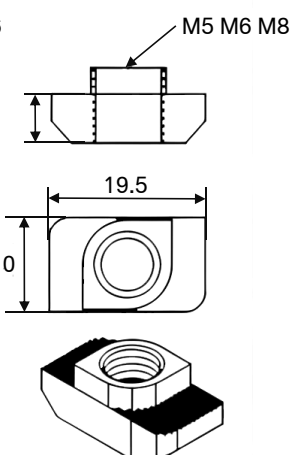
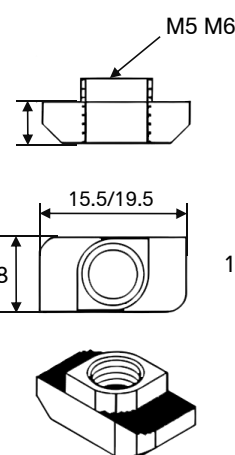
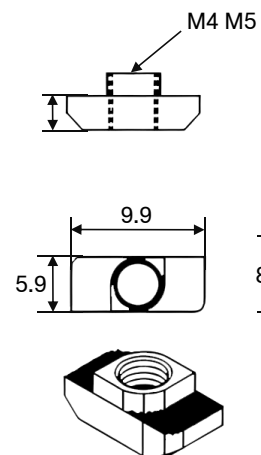
**Material:**  
Galvanized or Chrome Steel

**Applications:**  
T-nuts allow other connectors to be easily mounted to the profile grooves during assembly. It can automatically locate and lock automatically.



Order No:

|           |             |
|-----------|-------------|
| 6 series  | TY-TN4-6-20 |
|           | TY-TN4-6-20 |
| 8 series  | TY-TN4-6-20 |
|           | TY-TN4-6-20 |
|           | TY-TN4-6-20 |
| 10 series | TY-TN4-6-20 |
|           | TY-TN4-6-20 |
|           | TY-TN4-6-20 |





## Corner Bracket

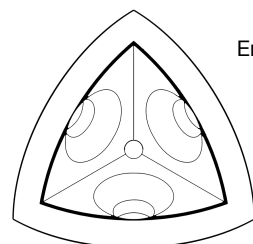
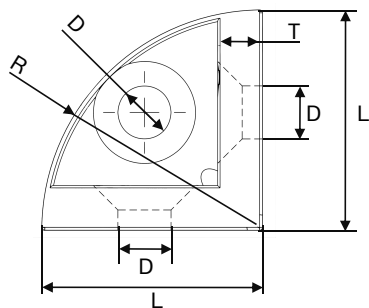
Material:  
Al-Alloy

Applications:  
Corner Bracket is a special connector for semi-circular profiles. It can connect two or three profiles together. The cover plate with paper configuration is very simple and beautiful, and the connecting bolts need to be ordered separately.

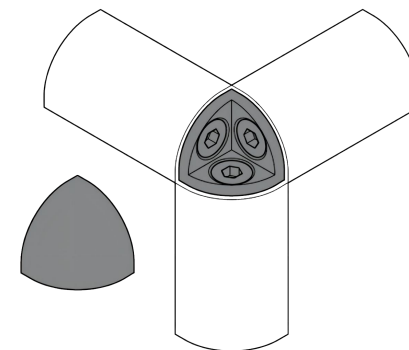
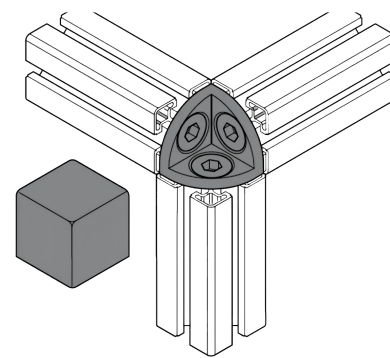
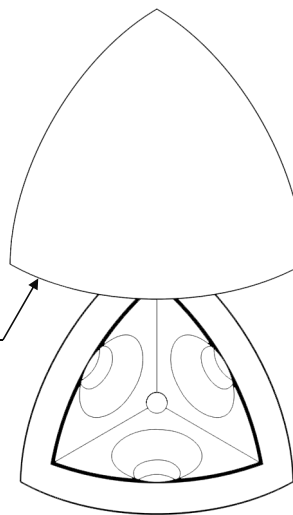
Order No:

|         |             |
|---------|-------------|
| 30x30RQ | TY-CBR30-8  |
| 40x40R  | TY-CBR40-8  |
| 45x45R  | TY-CBR45-10 |

|             | L    | D  | R    | T   | Tg |
|-------------|------|----|------|-----|----|
| TY-CBR30-8  | 27.8 | 9  | 22.8 | 6   | 2  |
| TY-CBR40-8  | 36.5 | 9  | 37.5 | 8   | 2  |
| TY-CBR45-10 | 42   | 13 | 34.3 | 8.3 | 3  |



End Cap (Nylon)



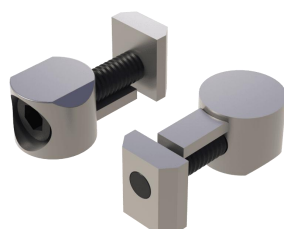
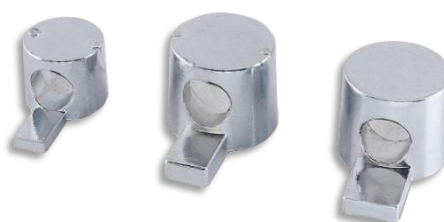
## Butt Joint

Material:  
Nickel Steel

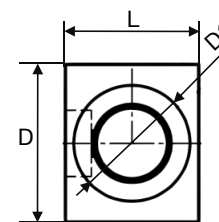
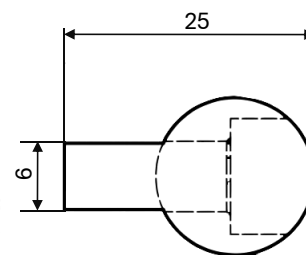
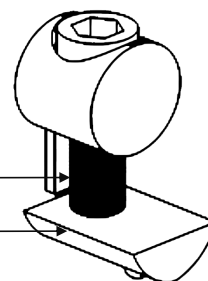
Applications:  
When the profile is connected at a cross or at a right angle, the Butt Joint can be selected. During assembly, it is necessary to drill holes in the specified size of the profile, bury the accessories, and put the elastic nut block into the groove of another profile, and then tighten the bolts.

Order No:

|           |              |
|-----------|--------------|
| 20 series | TY-BJ10-6-20 |
| 30 series | TY-BJ16-8-30 |
| 40 series | TY-BJ20-8-40 |
| 45 series | TY-BJ20-8-45 |



Mx Core Screw  
Half Round Nut(HRN)



|              | L    | W    | H    | H1   | D      | D1     | Mx    |
|--------------|------|------|------|------|--------|--------|-------|
| TY-BJ10-6-20 | 8.4  | 5.8  | 17.8 | 7.5  | ∅ 10   | ∅ 7    | M4x12 |
| TY-BJ16-8-30 | 12   | 9.8  | 22   | 9    | ∅ 13.7 | ∅ 10.5 | M6x20 |
| TY-BJ20-8-40 | 15.8 | 9.8  | 28.5 | 10.8 | ∅ 18.5 | ∅ 13.5 | M8x30 |
| TY-BJ20-8-45 | 15.5 | 11.8 | 26.8 | 11   | ∅ 17.6 | ∅ 13   | M8x30 |

\*Butt Joint installation process dimension table

| Profiles        |              | L    | H    | T    | Mx    |
|-----------------|--------------|------|------|------|-------|
| 20 series       | HY-BJ10-6-20 | 10.5 | 9.2  | 13.5 | M4x12 |
| 30 series       | HY-BJ16-8-30 | 15   | 13   | 15.5 | M6x20 |
| 40 series       | HY-BJ20-8-40 | 19   | 16.8 | 19.5 | M8x30 |
| 45/50/60 series | HY-BJ20-8-45 | 19   | 16.8 | 18.5 | M8x30 |



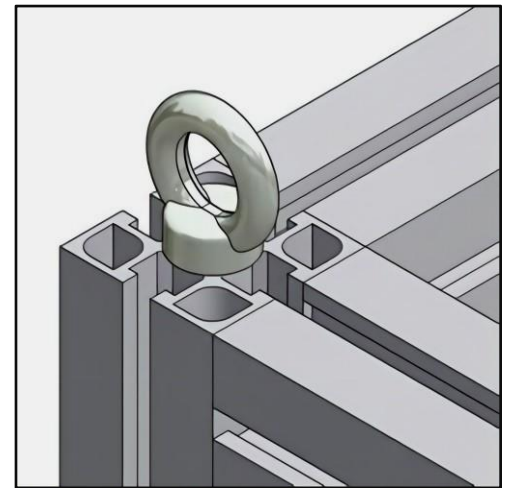
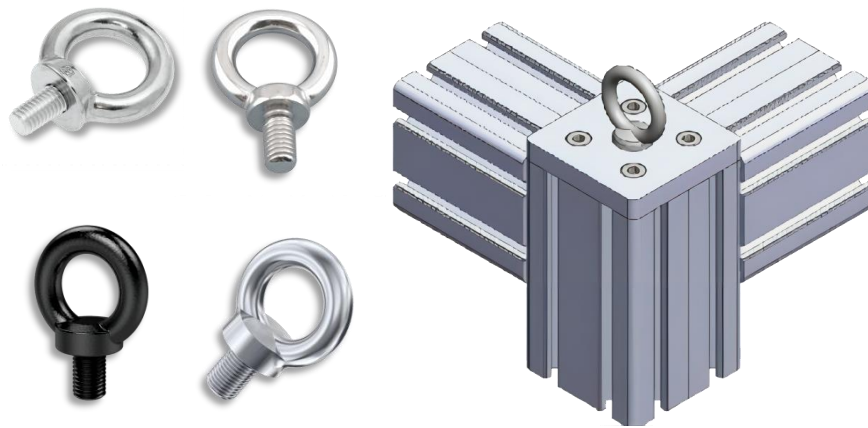




## Eye-Bolt

**Material:**  
Galvanized or Chrome Steel

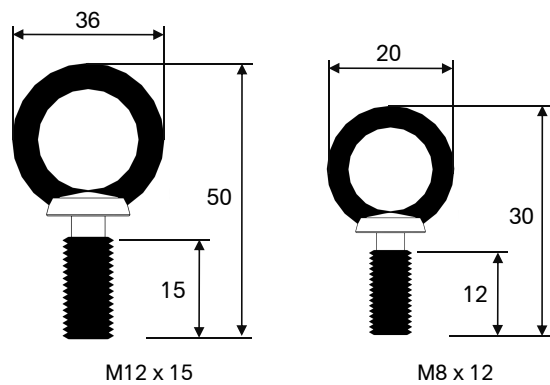
**Applications:**  
Eye bolts can be used as a connection point for rigging, anchoring, pulling, pushing, or hoisting applications. Although eye bolts are commonly used in industrial applications



Order No:

M8x12 TY-EBM8

M12x15 TY-EBM12



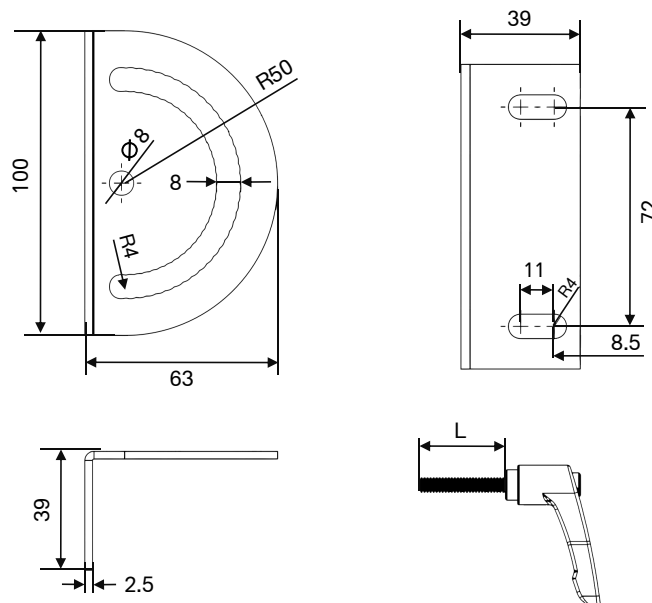
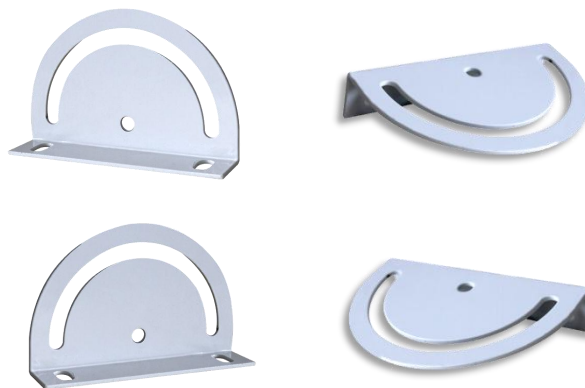
## Free plate connector

**Material:**  
Carbon Steel

**Applications:**  
The free plate connector is used for profile stacking connection and can be used for any angle adjustment, the adjustment range is from 0 degrees to 180 degrees

Order No:

TY-FPC-40



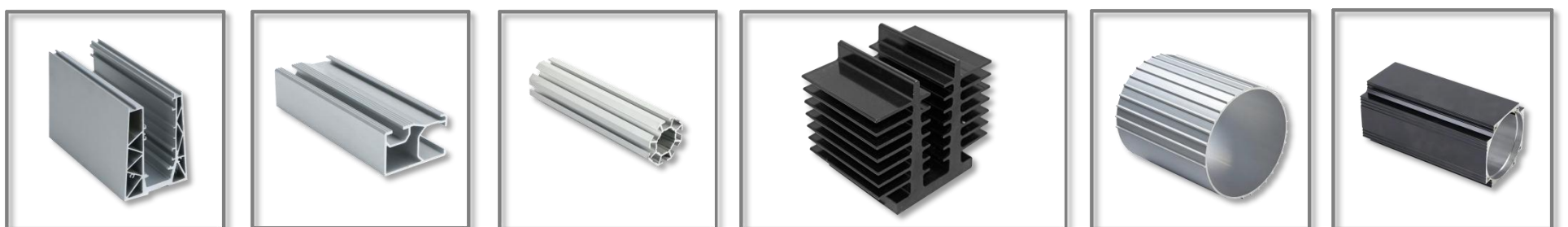
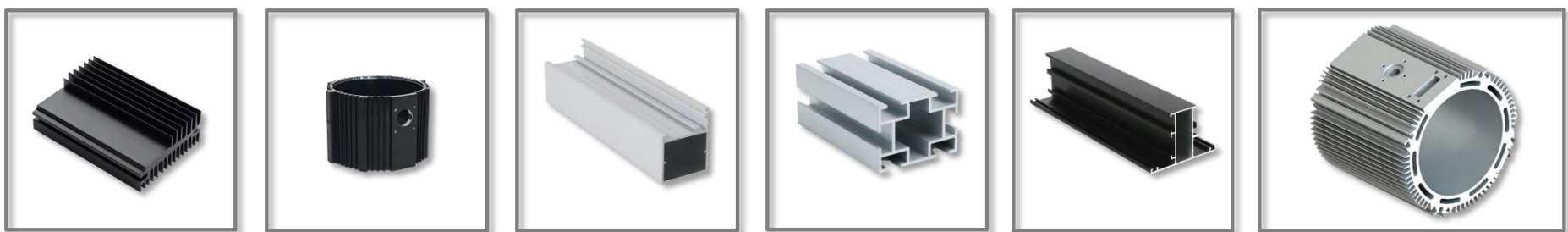
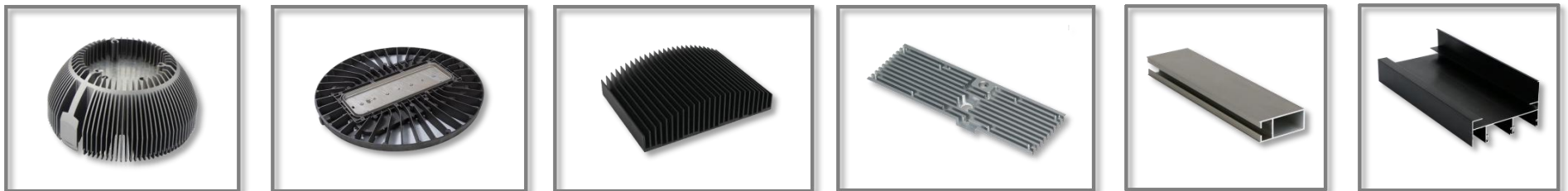
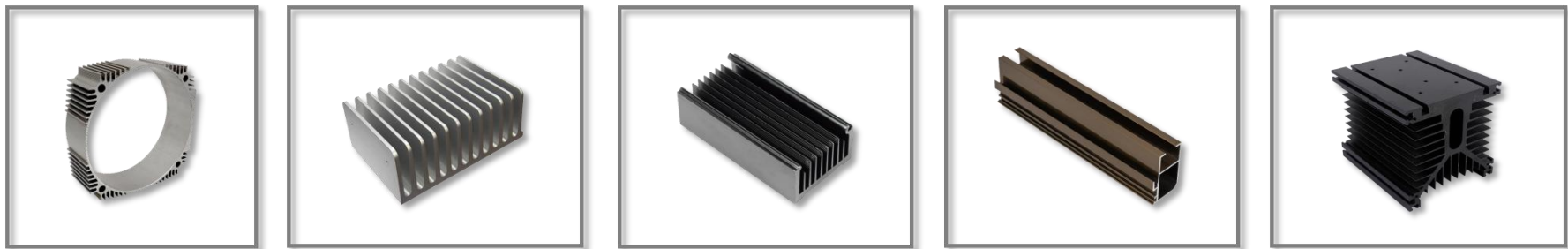
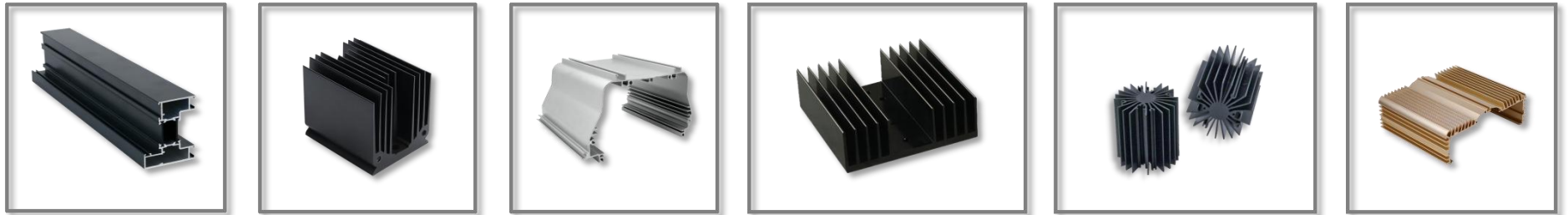
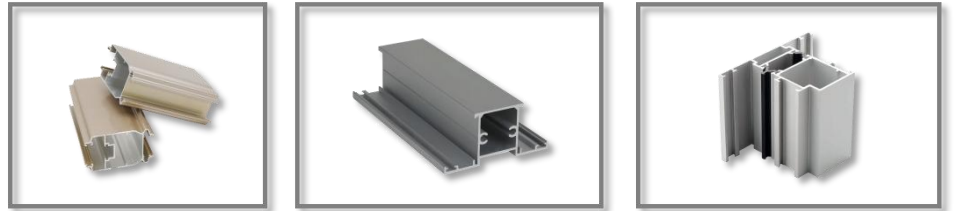


## Customized Products

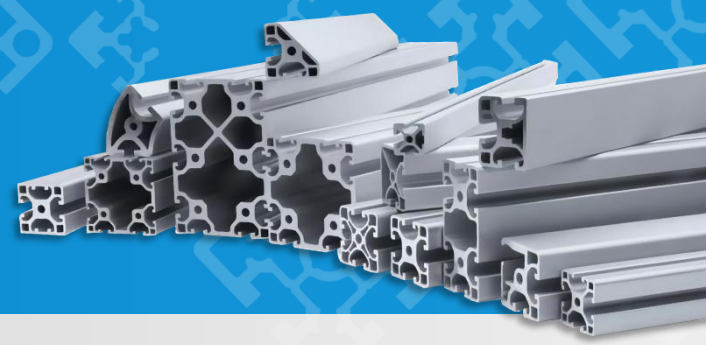
### Applications:

Standard aluminum extrusions have a fixed cross-sectional size and structure. It is designed with slots and holes. After some simple processing, it can be built into various frames such as workbenches and fences with corner codes and other accessories. Basically, it can be used universally. Therefore, a standardized production model can be adopted.

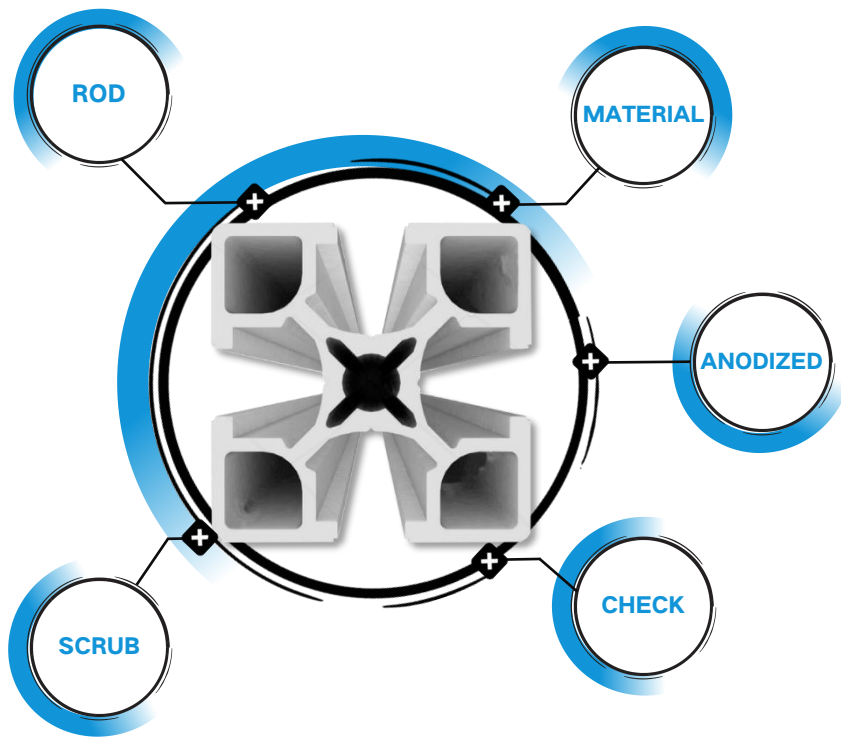
Non-standard aluminum extrusions are mostly used as radiators, cabinets and other equipment components. They must be designed and produced according to specific customers, specific cross-sectional dimensions, tolerance requirements, and surface requirements of specific equipment, so standardized production is impossible. We can open mold production according to different needs, So whether you are looking for a new source for an existing design, We can help you with your new design ideas, Custom Profiles are the specialists you need.







For more information visit [www.zjnbty.com](http://www.zjnbty.com)



## TONGYE® Aluminium Solution Features

### Rod:

The production cost of aluminium rod is higher, however the traditional casting process does not guarantee uniform distribution of aluminum alloy, which easily causes surface blemish.

Tongye puts homogeneous aluminum rod to use, and it will reduce die/mold wastage during extrusion, thus improving aluminium profile's surface finish and mechanical property.

### Scrub:

Non-scrub treatment is extremely easy to cause surface blemishes, Tongye adopts means of frosting oxidized, beauty surface, no blemishes.

### Material:

To save costs, some factories use recycling scrap aluminium as raw material, the produced aluminum profile is usually out of flatness and gray surface even easy to breakage due to high content of impurities.

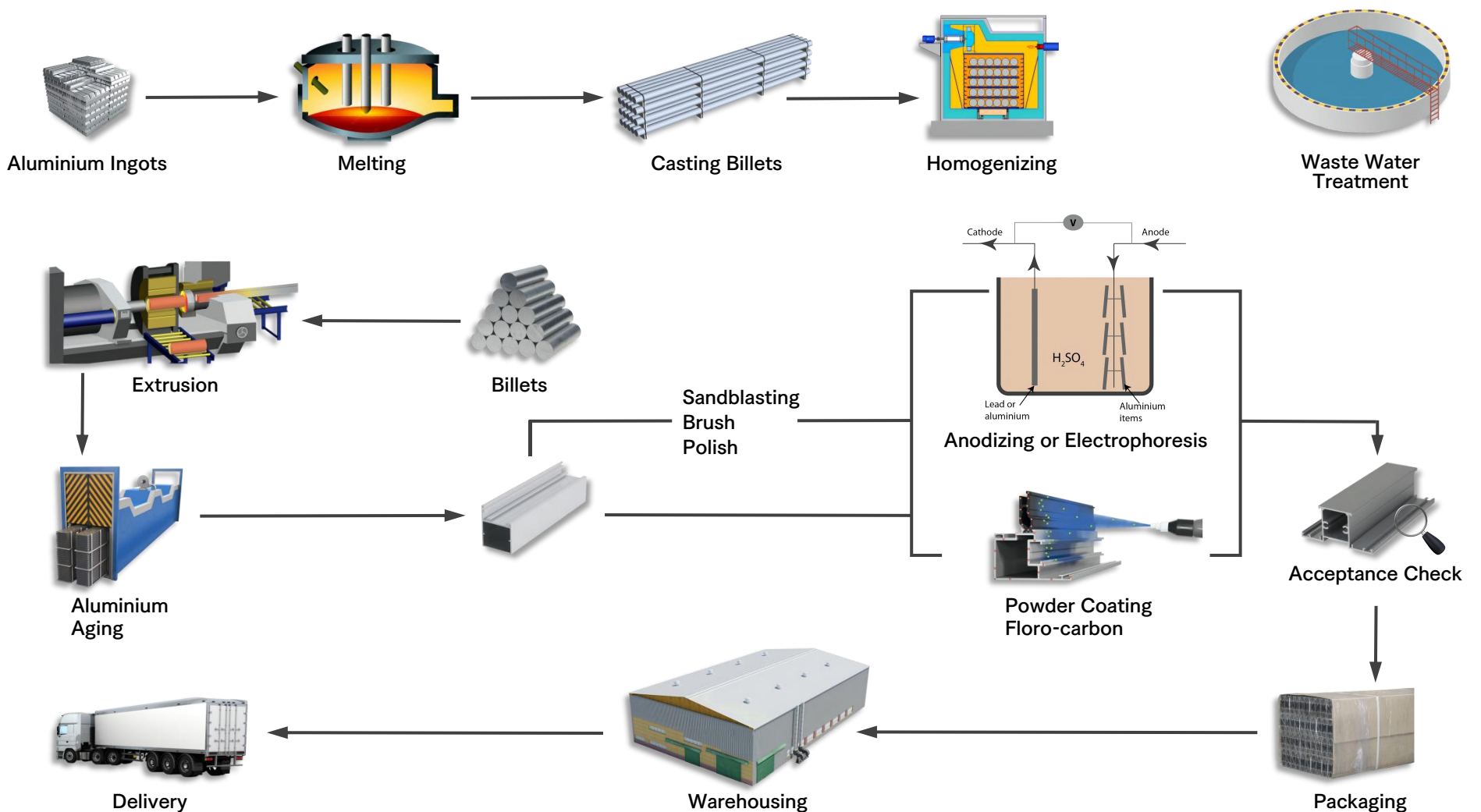
Tongye's raw material is A00 standard aluminium ingot that contains 99.99% Al.

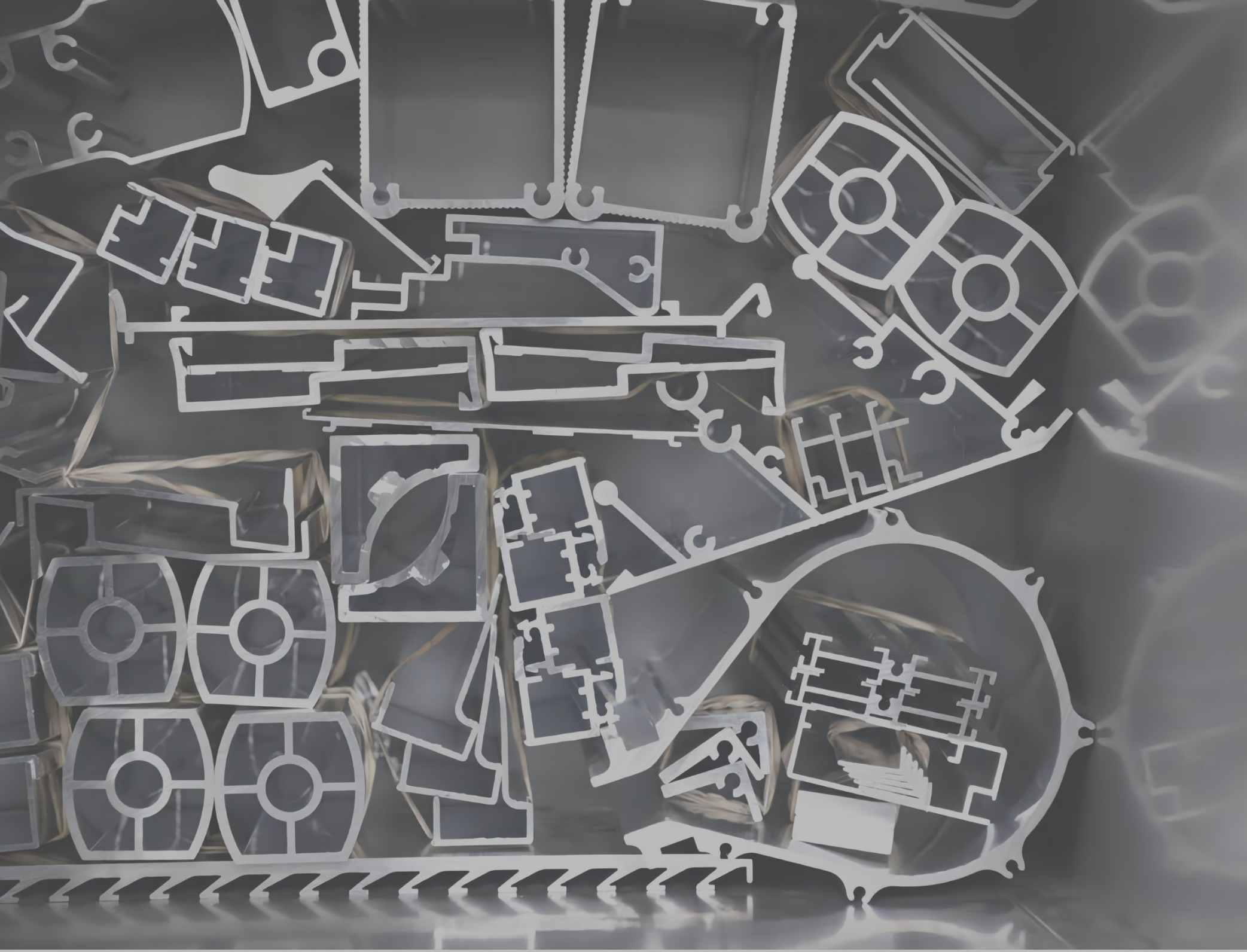
### Anodized:

To save costs and increase production speeds, some factories reduce anodized time, which causes the thickness of oxidation film not up to standard. Tongye's thickness of oxidation film is more than 30% of national standard.

### Check:

We have detection tool such as Spectroscope, end face measuring instrument, hardness testing and film thickness measurement etc, there are 12 rigorous testing procedures. Tongye has been committed to producing high quality aluminium profiles.





## THE POWER TO FABRICATION

Ningbo Tongye Mechanical & Electric Equipment Co., Ltd (TONGYE) established in 2000 as a company driven by continuous innovation. TONGYE is leader in design, manufacturing and supply of aluminum extrusion profile, steel and metal parts.

# TONGYE®

Mechanical & Electric  
Equipment Co., Ltd.

Head Office

Tel: +0086 879 61357

Fax: +0086 872 99143

Email: [info@zjnbty.com](mailto:info@zjnbty.com)

Branch Office

Tel: +0086 873 06378

Fax: +0086 873 25959

Email: [info@zjnbty.com](mailto:info@zjnbty.com)

168 Baizhang Road, Yinzhou District, 17B1  
Ningbo City, Zhejiang Province 315040

[www.zjnbty.com](http://www.zjnbty.com)